

# KRAYE ANGUS PRODUCTION SALE

Saturday - 1:00 P.M. MST

**APRIL 4, 2009**

at the Kraye Sale Facility -  
east edge of Mullen

**MULLEN, NEBRASKA**

**SELLING 120 LOTS  
PERFORMANCE BRED  
YEARLING ANGUS BULLS  
+ 20 Purebred Commercial Yearling Heifers**

C  
O  
M  
M  
I  
T  
M  
E  
N  
T  
  
T  
O  
  
E  
X  
C  
E  
L  
L  
E  
N  
C  
E



Lot 15

**A PROGRAM WITH A PURPOSE...  
A FAMILY WITH A COMMITMENT!!!**



Lot 22

# KRAYE ANGUS

WWW.KRAYEANGUS.COM

**WELCOME** to the 18th Annual Kraye Angus Production Sale.

At Kraye Angus cattle is what we do. Our daily routines are centered on the cattle and what their current needs are. If we aren't actually feeding the cattle we are busy growing hay to feed them, so it's fortunate for us that we are 100% committed to raising the best cattle possible.

The bulls in this catalog are a product of that commitment. These bulls have met the standards that we have set for consistency, quality and integrity. From birth thru weaning, the bull calves are closely evaluated, and bulls that don't meet our standards are made into steers and sold as feeders. This sale is made up of the top 55% of our total bull crop. The average EPD's for this group of bulls are BW +2.8, WW +52, Milk +23, and YW +94, making this sale offering a solid set of quality beef bulls. The bulls are calm and easily handled, with naturally good dispositions.

Sired by the most progressive bulls in the Angus breed, these bulls will deliver some of the most powerful genetics available, for both performance and calving ease.

All of the bulls will be semen tested and ultra sounded, with the ultra sound results processed thru the CUP program.

We are proud to present this solid set of yearling Angus bulls. These bulls are deep bodied, heavily muscled, strong boned and structurally sound and ready to go to work in anyone's cow herd.

The yearling heifers were selected from our replacement heifers and were subjected to the same quality standards that the bulls have been. These heifers are offered for sale, in groups of five, as purebred commercial heifers, and will be an excellent opportunity for someone to add some quality genetics to their cow herd.

The bulls and heifers are fed at home and are available for inspection at any time.

If you are looking to improve the quality of your cattle, it's been proven that the fertility and reproductive soundness of the Angus breed, along with strong maternal traits and growth efficiency are unequalled in any other breed.

The bulls and heifers in this catalog have been developed to be top quality, honest, hard working cattle.

We take enormous pride in consistently offering year after year, cattle of this quality. We appreciate your interest in our cattle program and if we can be of any assistance to you in your selection of your herd bulls, please give us a call.

*Sincerely,  
The Kraye family*

## **- 1<sup>st</sup> Breeding Season Guarantee -**

*Bulls selling for \$2000, or more, are guaranteed for 60 days from the first turnout against breeding injury.*

*If a replacement bull is available, he will be provided. If the buyer prefers, credit towards another bull will be given in next year's sale. Credit for the amount of purchase price minus \$1000 will be applied towards the purchase of another bull. Buyer keeps all salvage value. Please notify us, as soon as possible, should injury occur and prior to the injured bull being sold for salvage.*

*This is not a Mortality Insurance Policy, nor does it cover mismanagement or neglect. We do not cover injuries sustained prior to the breeding season, if your bull is turned out with other bulls.*

*If mortality insurance is wanted, a livestock insurance representative will be available.*

18th Annual

# KRAYE ANGUS Production Sale

Saturday, APRIL 4, 2009  
1:00 P.M. MST

at the Kraye Sale Facility - east edge of Mullen  
**MULLEN, NEBRASKA**

---

---

**Selling 120 Lots  
Performance Bred Yearling  
Angus Bulls**

---

---

## LIVESTOCK PRESS REPRESENTATIVES

Matt Printz ..... Angus Journal / 308-856-0070  
Randy Rasby ..... Livestock Plus / 308-386-4857  
Holly Hulings Roeser ..... NPLAC / 308-530-8357

## VETERINARIAN

Jerry Thompson ..... Stockman's Vet Clinic  
North Platte, NE

\*All of the sale offering received Dectomax Pour On.

**Complete Performance Information.  
Pelvic & Scrotal Measurements Will Be  
Provided On Sale Day.**

**ALL BULLS WILL BE FERTILITY TESTED AND  
WILL SELL AS GUARANTEED BREEDERS.**

TERMS AND CONDITIONS: These cattle sell under the  
Suggested Terms and Conditions of the American Angus  
Association dated June 12, 1988. These terms are available at  
anytime upon request.

**FREE Delivery Within 200 Miles**

Refund for taking bulls home on Sale day  
Volume Discount:

3 bulls - 3%, 4 bulls - 4%, 5 or more - 5%  
Sight Unseen Purchase...Guaranteed Satisfaction

---

---

**Sale Day Phone: 308-546-2271**

*Complimentary Lunch Sale Day*

**AUCTIONEER: Tracy Harl / 402-461-3575**

**KRAYE ANGUS**

John Kraye 308-546-2524

David Kraye 308-546-7015

[jkraye@neb-sandhills.net](mailto:jkraye@neb-sandhills.net)

Catalog Designed and Printed by  Pro Printing  
& Graphics

# REFERENCE SIREs

**A**

## MYTTY IN FOCUS

Reg # 13880818

SAF Focus of ER

Mytty Countess 906

SAF Fame

GDAR Forever Lady 246

Sitz Alliance 6595

Baldridge Countess 357

### Expected Progeny Difference

|                       |            |              |               |            |
|-----------------------|------------|--------------|---------------|------------|
| BW -1.3               | WW +55     | Milk +24     | YW +100       | SC +1.75   |
| Carc Wt: +4           | Marb: +.56 | Ribeye: +.05 | Fat Th: +.039 |            |
| \$ Values: \$W +37.62 |            | \$F +37.31   | \$G +27.07    | \$B +43.20 |

**B**

## RITO 2V1 OF 2536 1407

Reg # 14088249

BON VIEW NEW DESIGN 1407

GAR PRECISION 2536

B/R New Design 036

Bon View Pride 664

GAR Precision 1680

GAR Ext 2104

### Expected Progeny Difference

|                       |              |                |                 |            |
|-----------------------|--------------|----------------|-----------------|------------|
| BW +4.0               | WW +61       | Milk +27       | YW +114         | SC +.60    |
| Carc Wt: I +29        | Marb: I +.60 | Ribeye: I +.52 | Fat Th: I +.043 |            |
| \$ Values: \$W +24.08 |              | \$F +49.63     | \$G +29.07      | \$B +65.21 |

**C**

## H A IMAGE MAKER 0415

Reg # +13739532

HERO 6267 OF RR 2418

HA RITO BLACKCAP 9038

RR Hero 6267

RR Everelda Entense 0413

H 96 Rito 2100 7371

H 96 Blackcap 3835

### Expected Progeny Difference

|                       |              |                |                 |            |
|-----------------------|--------------|----------------|-----------------|------------|
| BW +.6                | WW +66       | Milk +36       | YW +110         | SC +.22    |
| Carc Wt: I +26        | Marb: I +.03 | Ribeye: I +.22 | Fat Th: I -.023 |            |
| \$ Values: \$W +45.12 |              | \$F +43.29     | \$G +12.62      | \$B +45.60 |

**D**

## HYLINE RIGHT TIME 338

Reg # 13058662

LEACHMAN RIGH TIME

HYLINE PRIDE 265

N Bar Emulation EXT

Leachman Erica 0025

Hyline SVF Traveler 0115

Hyline Pride 870

### Expected Progeny Difference

|                       |              |                |                 |            |
|-----------------------|--------------|----------------|-----------------|------------|
| BW +3.9               | WW +60       | Milk +28       | YW +106         | SC +1.52   |
| Carc Wt: I +21        | Marb: I +.22 | Ribeye: I +.16 | Fat Th: I +.019 |            |
| \$ Values: \$W +38.76 |              | \$F +41.53     | \$G +16.14      | \$B +46.08 |

**E**

## SAV NET WORTH 4200

Reg # 14739204

SAV 8180 TRAVELER 004

SAV MAY 2410

Sitz Traveler 8180

Boyd Forever Lady 8003

SAF 598 Bando 5175

SAV May 6269

### Expected Progeny Difference

|                       |              |                |                 |            |
|-----------------------|--------------|----------------|-----------------|------------|
| BW +4.6               | WW +61       | Milk +29       | YW +116         | SC +.83    |
| Carc Wt: I +21        | Marb: I +.23 | Ribeye: I +.40 | Fat Th: I +.034 |            |
| \$ Values: \$W +21.83 |              | \$F +51.80     | \$G +18.14      | \$B +50.95 |

**F**

## BOYD ON TARGET 1083

Reg # 13828202

SAF 598 BANDO 5175

BOYD FOREVER LADY 7095

Bon View Bando 598

SAF Royal Lass 1002

DHD Traveler 6807

SVF Forever Lady 57D

### Expected Progeny Difference

|                       |              |                |                 |            |
|-----------------------|--------------|----------------|-----------------|------------|
| BW +3.1               | WW +54       | Milk +21       | YW +110         | SC +.97    |
| Carc Wt: I +17        | Marb: I +.23 | Ribeye: I -.05 | Fat Th: I +.039 |            |
| \$ Values: \$W +24.00 |              | \$F +48.24     | \$G +11.24      | \$B +40.41 |

\$Value Indexes

\$VALUES are multi-trait selection indexes expressed in dollars per head, to assist commercial beef producers by adding simplicity to genetic selection decisions. A \$Value has meaning only when used in comparison to the \$Value of another animal. For example, just as with EPD's, variation in \$Values between animals indicates average expected differences in the relative value of progeny if random mating is assumed and the calves are exposed to the same environment.

WEANED CALF VALUE (\$W): an index expressed in dollars per head, is the expected average difference in future progeny performance for preweaning merit. \$W includes both revenue and cost adjustments associated with differences in birth weight, weaning direct growth, maternal milk, and mature cow size.

FEEDLOT VALUE (\$F): an index expressed in dollars per head, is the expected average difference in future progeny performance for postweaning performance compared to progeny of other sires.

GRID VALUE (\$G): an index expressed in dollars per head, is the expected average difference in future progeny performance for carcass grid merit compared to progeny of other sires.

BEEF VALUE (\$B): an index expressed in dollars per head, is the expected average difference in future progeny performance for postweaning and carcass value compared to progeny of other sires. The \$B value combines the contributions of \$F and \$G.

**\$VALUES**

\$W +21.28

\$F +13.60

\$G +12.53

\$B +25.32

# REFERENCE SIREs

## WOODHILL FORESIGHT

**G**

Reg # +13936986

PAPA FORTE 1921

Papa Optima 9818

BON VIEW GAMMER 85

Papa Envious Blackbird 8832

Bon View Bando 598

Bon View Gammer 233

### Expected Progeny Difference

|                       |            |              |               |          |
|-----------------------|------------|--------------|---------------|----------|
| BW +4.0               | WW +62     | Milk +26     | YW +107       | SC +1.67 |
| Carc Wt: +13          | Marb: +.48 | Ribeye: +.02 | Fat Th: -.013 |          |
| \$ Values: \$W +32.97 | \$F +41.77 | \$G +28.86   | \$B +53.80    |          |

**H**

## H S A F BANDO 1961

Reg # +13896250

SAF 598 BANDO 5175

Bon View Bando 598

SAF Royal Lass 1002

JKS MISS CHEYENNE 196

N Bar Emulation EXT

Magic Meadow Miss Cheyenne

### Expected Progeny Difference

|                       |            |              |               |       |
|-----------------------|------------|--------------|---------------|-------|
| BW +2.4               | WW +56     | Milk +28     | YW +100       | SC +0 |
| Carc Wt: +18          | Marb: +.30 | Ribeye: -.08 | Fat Th: +.030 |       |
| \$ Values: \$W +29.46 | \$F +36.91 | \$G +14.51   | \$B +41.73    |       |

**I**

## 4 G DECADE 6111

Reg # 15565378

LAU DECADE

CA Future Direction 5321

LVVF Alliance JC 111

4 G MIST 243

Grandview Womack Direct

4 G Mist 972

### Expected Progeny Difference

|                       |            |              |               |       |
|-----------------------|------------|--------------|---------------|-------|
| BW +2.3               | WW +59     | Milk +22     | YW +98        | SC +0 |
| Carc Wt: +15          | Marb: +.37 | Ribeye: +.17 | Fat Th: +.034 |       |
| \$ Values: \$W +30.20 | \$F +33.69 | \$G +21.16   | \$B +45.51    |       |

**J**

## TC RITO 416

Reg # 14844714

RITO 112 OF 2536 RITO 616

Rito 616 of 4B20 6807

GAR Precision 2536

TC CHLOE 2056

Connealy Forefront

TC Chloe 6010

### Expected Progeny Difference

|                       |            |              |               |         |
|-----------------------|------------|--------------|---------------|---------|
| BW +1.4               | WW +59     | Milk +26     | YW +104       | SC -.02 |
| Carc Wt: +16          | Marb: +.67 | Ribeye: +.14 | Fat Th: +.028 |         |
| \$ Values: \$W +31.11 | \$F +39.85 | \$G +30.08   | \$B +56.47    |         |

**K**

## B/R AMBUSH 28

Reg # +14188956

ROCKN D AMBUSH 1531

Paramont Ambush 2172

MS Blackcap Band of RD 1301

B/R RUBY OF TIFFANY 8250

N Bar Emulation EXT

B/R Ruby of Tiffany 5113

### Expected Progeny Difference

|                       |              |               |                |         |
|-----------------------|--------------|---------------|----------------|---------|
| BW +3.4               | WW +59       | Milk +13      | YW +109        | SC -.30 |
| Carc Wt: I+24         | Marb: I+1.06 | Ribeye: I+.58 | Fat Th: I-.027 |         |
| \$ Values: \$W +22.00 | \$F +45.10   | \$G +45.82    | \$B +78.35     |         |

**L**

## CONNELLY FOUNDATION 426

Reg # 14843192

CA FUTURE DIRECTION 5321

GAR Precision 1680

CA Miss Power Fix 308

RUBY RED OF CONANGA 436

Bon View New Design 878

Ruby of Conanga 430

### Expected Progeny Difference

|                       |             |               |                |         |
|-----------------------|-------------|---------------|----------------|---------|
| BW +3.1               | WW +55      | Milk +27      | YW +103        | SC +.26 |
| Carc Wt: I+27         | Marb: I+.57 | Ribeye: I+.20 | Fat Th: I+.021 |         |
| \$ Values: \$W +25.19 | \$F +40.42  | \$G +26.91    | \$B +59.74     |         |

**M**

## DAIGGER BUSHMAN 518

Reg # 15128450

ACF BUSHMAN 1132

Rockn D Ambush 1531

Davis Yr Blackbird 558H

JD MISS PARA 9826

Sitz Alliance 6595

JD Miss Para 7026

### Expected Progeny Difference

|                       |             |             |                |       |
|-----------------------|-------------|-------------|----------------|-------|
| BW +1.3               | WW +61      | Milk +18    | YW +102        | SC +0 |
| Carc Wt: I+13         | Marb: I+.37 | Ribeye: I+0 | Fat Th: I+.024 |       |
| \$ Values: \$W +31.16 | \$F +36.98  | \$G +20.42  | \$B +43.94     |       |

**L  
O  
T  
1**



**1**

**KRAYE IN FOCUS JK 898**

Calved 2/06/08      Tattoo: 898  
**BW: 89      205 ADJ: 841      365 ADJ: 1342      ADG: 3.5**

|                            |                       |
|----------------------------|-----------------------|
| SAF Focus of ER .....      | SAF Fame              |
| <b>MYTTY IN FOCUS</b>      | GDAR Forever Lady 246 |
| Mytty Countess 906 .....   | Sitz Alliance 6595    |
|                            | Baldrige Countess 357 |
| A&B Yukon 2115 .....       | A&B Yukon 7150        |
| <b>MISS CANDAR JK 6283</b> | A&B Annie 4008        |
| Miss Candar JK 117 .....   | HAR New Design H81    |
|                            | Miss Candar FK 219    |

**EXPECTED PROGENY DIFFERENCE**

**BW I+2.1      WW I+62      MILK I+26      YW I+108**

Cow's record: 1 calf weaning ratio 119. Granddam and great granddam are Pathfinder cows. Recommended for larger heifers.

**2**

**KRAYE IMAGE MAKER HK 8311**

Calved 2/20/08      Tattoo: 8311  
**BW: 84      205 ADJ: 841      365 ADJ: 1201      ADG: 3.2**

|                             |                          |
|-----------------------------|--------------------------|
| Hero 6267 of RR 2418 .....  | RR Hero 6267             |
| <b>HA IMAGE MAKER 0415</b>  | RR Everelda Entense 0413 |
| HA Rito Blackcap 9038 ..... | H 96 Rito 2100 7371      |
|                             | H 96 Blackcap 3835       |
| Dameron VRD 237 .....       | Vermilion Dateline 7078  |
| <b>BLACKBIRD HK 6340</b>    | Sedgwicks Wendy 3859     |
| Blackbird HK 3255 .....     | QLC Exacto G337M         |
|                             | HAR Blackbird H184       |

**EXPECTED PROGENY DIFFERENCE**

**BW I+2.5      WW I+64      MILK I+32      YW I+110**

Dam's record: 1 calf ratio 119. Great granddam is a Pathfinder cow. Recommended for larger heifers.

**L  
O  
T  
3**



**3**

**KRAYE IMAGE MAKER JK 852**

Calved 2/02/08      Tattoo: 852  
**BW: 95      205 ADJ: 830      365 ADJ: 1348      ADG: 3.6**

|                                    |                          |
|------------------------------------|--------------------------|
| Hero 6267 of RR 2418 .....         | RR Hero 6267             |
| <b>HA IMAGE MAKER 0415</b>         | RR Everelda Entense 0413 |
| HA Rito Blackcap 9038 .....        | H 96 Rito 2100 7371      |
|                                    | H 96 Blackcap 3835       |
| Step ladder 004 Traveler 466 ..... | SAV 8180 Traveler 004    |
| <b>MISS BLACKBIRD JK 6260</b>      | Star E Z Bardot 615      |
| Miss Blackbird JK 4122 .....       | Vermilion Dateline 7078  |
|                                    | Miss Blackbird FK 994    |

**EXPECTED PROGENY DIFFERENCE**

**BW I+3.9      WW I+65      MILK I+31      YW I+109**

Dam's record: 1 calf ratio 118.

L  
O  
T  
4



4

**KRAYE ON TARGET JK 834**

|                              |                     |                      |                 |
|------------------------------|---------------------|----------------------|-----------------|
|                              | Calved 1/31/08      | Tattoo: 834          |                 |
| <b>BW: 88</b>                | <b>205 ADJ: 811</b> | <b>365 ADJ: 1377</b> | <b>ADG: 3.9</b> |
| SAF 598 Bando 5175 .....     |                     | Bon View Bando 598   |                 |
| <b>BOYD ON TARGET 1083</b>   |                     | SAF Royal Lass 1002  |                 |
| Boyd Forever Lady 7095 ..... |                     | DHD Traveler 6807    |                 |
|                              |                     | SVF Forever Lady 57D |                 |
| QLC B61 Merger A562H .....   |                     | Krugerrand Merger 34 |                 |
| <b>MISS PRIDE JK 089</b>     |                     | QLC B5 Mona Y299A    |                 |
| Miss Pride JK 739 .....      |                     | TJR Krugerrand A910  |                 |
|                              |                     | Miss Pride JK 917    |                 |

EXPECTED PROGENY DIFFERENCE

|                 |                |                  |                |
|-----------------|----------------|------------------|----------------|
| <b>BW I+2.2</b> | <b>WW I+49</b> | <b>MILK I+24</b> | <b>YW I+91</b> |
|-----------------|----------------|------------------|----------------|

Dam's record: 7 calves ratio 112. Dam is a Pathfinder cow.

5

**KRAYE MIDLAND JK 8409**

|                             |                     |                            |                 |
|-----------------------------|---------------------|----------------------------|-----------------|
|                             | Calved 3/15/08      | Tattoo: 8409               |                 |
| <b>BW: 90</b>               | <b>205 ADJ: 813</b> | <b>365 ADJ: 1198</b>       | <b>ADG: 2.8</b> |
| BR Midland .....            |                     | Twin Valley Precision E161 |                 |
| <b>A&amp;B MIDLAND 4039</b> |                     | BR Royal Lass 7036-19      |                 |
| A&B Kassie Rose 9175 .....  |                     | EXAR Krugerrand 7119       |                 |
|                             |                     | A&B Rose 7032              |                 |
| Dameron 365-937 .....       |                     | TC Stockman 365            |                 |
| <b>MISS QUEEN JK 2273</b>   |                     | Miss Queen FK 408          |                 |
| Miss Queen JK 949 .....     |                     | SAF Fame                   |                 |
|                             |                     | Miss Queen JK 7202         |                 |

EXPECTED PROGENY DIFFERENCE

|                 |                |                  |                |
|-----------------|----------------|------------------|----------------|
| <b>BW I+2.5</b> | <b>WW I+59</b> | <b>MILK I+19</b> | <b>YW I+97</b> |
|-----------------|----------------|------------------|----------------|

Dam's record: 5 calves ratio 107. Dam is a Pathfinder cow.

Recommended for larger heifers.

6

**KRAYE 2V1 JK 8178**

|                                |                     |                           |                 |
|--------------------------------|---------------------|---------------------------|-----------------|
|                                | Calved 2/10/08      | Tattoo: 8178              |                 |
| <b>BW: 90</b>                  | <b>205 ADJ: 810</b> | <b>365 ADJ: 1268</b>      | <b>ADG: 3.2</b> |
| Bon View New Design 1407 ..... |                     | B/R New Design 036        |                 |
| <b>RITO 2V1 OF 2536 1407</b>   |                     | Bon View Pride 664        |                 |
| GAR Precision 2536 .....       |                     | GAR Precision 1680        |                 |
|                                |                     | GAR Ext 2104              |                 |
| Sitz Alliance 6595 .....       |                     | Sitz Traveler 8180        |                 |
| <b>MISS MATILDA JK 4180</b>    |                     | Sitz Barbaramere Jet 2698 |                 |
| Miss Matilda JK 016 .....      |                     | SAF Fame                  |                 |
|                                |                     | Miss Matilda JK 881       |                 |

EXPECTED PROGENY DIFFERENCE

|                 |                |                  |                 |
|-----------------|----------------|------------------|-----------------|
| <b>BW I+3.4</b> | <b>WW I+62</b> | <b>MILK I+26</b> | <b>YW I+108</b> |
|-----------------|----------------|------------------|-----------------|

Dam's record: 3 calves ratio 112.



**L  
O  
T  
7**



**7**

**KRAYE IN FOCUS JK 864**

|                       |                              |                      |                         |
|-----------------------|------------------------------|----------------------|-------------------------|
|                       | Calved 2/03/08               | Tattoo: 864          |                         |
| <b>BW: 82</b>         | <b>205 ADJ: 782</b>          | <b>365 ADJ: 1228</b> | <b>ADG: 3.1</b>         |
| <b>MYTTY IN FOCUS</b> | SAF Focus of ER .....        | SAF Fame             | GDAR Forever Lady 246   |
|                       | Mytty Countess 906 .....     | Sitz Alliance 6595   | Baldrige Countess 357   |
| <b>LASS JK 613</b>    | WAR Alliance 9126 6006 ..... | Sitz Alliance 6595   | WAR Bando 6006 598 4053 |
|                       | Lass JK 4120 .....           | B/R New Frontier 095 | QLC B53 Lass D115H      |

**EXPECTED PROGENY DIFFERENCE**

|                 |                |                  |                 |
|-----------------|----------------|------------------|-----------------|
| <b>BW I+0.4</b> | <b>WW I+59</b> | <b>MILK I+27</b> | <b>YW I+106</b> |
|-----------------|----------------|------------------|-----------------|

Dam's record: 1 calf ratio 111. Recommended for heifers.

**L  
O  
T  
8**



**8**

**KRAYE 2V1 JK 8249**

|                              |                                |                      |                    |
|------------------------------|--------------------------------|----------------------|--------------------|
|                              | Calved 2/16/08                 | Tattoo: 8249         |                    |
| <b>BW: 99</b>                | <b>205 ADJ: 795</b>            | <b>365 ADJ: 1333</b> | <b>ADG: 3.7</b>    |
| <b>RITO 2V1 OF 2536 1407</b> | Bon View New Design 1407 ..... | B/R New Design 036   | Bon View Pride 664 |
|                              | GAR Precision 2536 .....       | GAR Precision 1680   | GAR Ext 2104       |
| <b>BLACKCAP JK 0196</b>      | QLC B61 Merger A562H .....     | Krugerrand Merger 34 | QLC B5 Mona Y299A  |
|                              | JO Blackcap 7115 .....         | JO Heavy Duty 4130   | JO Blackcap 412    |

**EXPECTED PROGENY DIFFERENCE**

|                 |                |                  |                |
|-----------------|----------------|------------------|----------------|
| <b>BW I+4.3</b> | <b>WW I+55</b> | <b>MILK I+25</b> | <b>YW I+96</b> |
|-----------------|----------------|------------------|----------------|

Dam's record: 6 calves ratio 112. Dam is a Pathfinder cow.

**9**

**KRAYE RIGHT TIME JK 8215**

|                              |                              |                          |                     |
|------------------------------|------------------------------|--------------------------|---------------------|
|                              | Calved 2/13/08               | Tattoo: 8215             |                     |
| <b>BW: 93</b>                | <b>205 ADJ: 776</b>          | <b>365 ADJ: 1362</b>     | <b>ADG: 4.0</b>     |
| <b>HYLINE RIGHT TIME 338</b> | Leachman Right Time .....    | N Bar Emulation Ext      | Leachman Erica 0025 |
|                              | Hyline Pride 265 .....       | Hyline SVF Traveler 0115 | Hyline Pride 870    |
| <b>MISS ERICA JK 5233</b>    | Buffalos Frontier BN43 ..... | B/R New Frontier 095     | Buffalos Mary BN26  |
|                              | Miss Erica JK 158 .....      | War Command 7131 3247    | Miss Erica FK 695   |

**EXPECTED PROGENY DIFFERENCE**

|                 |                |                  |                 |
|-----------------|----------------|------------------|-----------------|
| <b>BW I+4.3</b> | <b>WW I+59</b> | <b>MILK I+23</b> | <b>YW I+102</b> |
|-----------------|----------------|------------------|-----------------|

Dam's record: 2 calves ratio 113. Great Granddam is a Pathfinder cow.

**L  
O  
T  
10**



**10**

**KRAYE NET WORTH JK 885**

|                               |                          |                          |                 |
|-------------------------------|--------------------------|--------------------------|-----------------|
|                               | Calved 2/05/08           | Tattoo: 885              |                 |
| <b>BW: 102</b>                | <b>205 ADJ: 773</b>      | <b>365 ADJ: 1256</b>     | <b>ADG: 3.4</b> |
| SAV 8180 Traveler 004 .....   | Sitz Traveler 8180       | Boyd Forever Lady 8003   |                 |
| <b>SAV NET WORTH 4200</b>     | SAF 598 Bando 5175       | SAV May 6269             |                 |
| SAV May 2410 .....            | Connealy Dateline        | Vermilion Blackbird 5044 |                 |
| Vermilion Dateline 7078 ..... | Vermilion Blackbird 5044 | Gibb Rito Power 7112     |                 |
| <b>MISS ROSE JK 2197</b>      | Miss Rose JK 4177 .....  | Miss Rose Sion JK 653    |                 |

**EXPECTED PROGENY DIFFERENCE**

|                 |                |                  |                 |
|-----------------|----------------|------------------|-----------------|
| <b>BW I+5.5</b> | <b>WW I+56</b> | <b>MILK I+24</b> | <b>YW I+100</b> |
|-----------------|----------------|------------------|-----------------|

Dam's record: 5 calves ratio 107. Dam is a Pathfinder cow.

**L  
O  
T  
11**



**11**

**KRAYE DECADE MK 8353**

|                           |                          |                      |                 |
|---------------------------|--------------------------|----------------------|-----------------|
|                           | Calved 2/25/08           | Tattoo: 8353         |                 |
| <b>BW: 89</b>             | <b>205 ADJ: 776</b>      | <b>365 ADJ: 1376</b> | <b>ADG: 4.1</b> |
| Lau Decade .....          | CA Future Direction 5321 | LUVF Alliance JC 111 |                 |
| <b>4 G DECADE 6111</b>    | Grandview Womack Direct  | 4 G Mist 972         |                 |
| 4 G Mist 243 .....        | Emulation N Bar 5522     | N Bar Primrose 2424  |                 |
| N Bar Emulation Ext ..... | GDAR Traveler 71         | Miss Queen MK 114    |                 |
| <b>MISS QUEEN MK 9100</b> | Miss Queen MK 394 .....  |                      |                 |

**EXPECTED PROGENY DIFFERENCE**

|                 |                |                  |                |
|-----------------|----------------|------------------|----------------|
| <b>BW I+2.0</b> | <b>WW I+54</b> | <b>MILK I+22</b> | <b>YW I+87</b> |
|-----------------|----------------|------------------|----------------|

Dam's record: 8 calves ratio 100. Granddam is a Pathfinder cow.

**12**

**KRAYE 2V1 JK 8391**

|                             |                             |                       |                 |
|-----------------------------|-----------------------------|-----------------------|-----------------|
|                             | Calved 3/08/08              | Tattoo: 8391          |                 |
| <b>BW: 89</b>               | <b>205 ADJ: 773</b>         | <b>365 ADJ: 1239</b>  | <b>ADG: 3.3</b> |
| Rito 2V1 of 2536 1407 ..... | Bon View New Design 1407    | GAR Precision 2536    |                 |
| <b>RTP RITO OF 2V1 5059</b> | EAF New Trend 36 107        | RA Linda Lass 5109    |                 |
| RTP New Lass 059 .....      | VDAR Vision 243             | Amen Duchess Lass 642 |                 |
| Amen 243 Vision 709 .....   | KD Cappuccino of Krugerrand | Miss Peggy JK 349     |                 |
| <b>MISS PEGGY JK 392</b>    | Miss Peggy JK 891 .....     |                       |                 |

**EXPECTED PROGENY DIFFERENCE**

|                 |                |                  |                |
|-----------------|----------------|------------------|----------------|
| <b>BW I+2.5</b> | <b>WW I+52</b> | <b>MILK I+26</b> | <b>YW I+90</b> |
|-----------------|----------------|------------------|----------------|

Dam's record: 4 calves ratio 107. Dam is a Pathfinder cow.

# 13

## KRAYE FOUNDATION JK 849

|                                |                            |                      |                 |
|--------------------------------|----------------------------|----------------------|-----------------|
| Calved 2/02/08                 |                            | Tattoo: 849          |                 |
| <b>BW: 88</b>                  | <b>205 ADJ: 772</b>        | <b>365 ADJ: 1234</b> | <b>ADG: 3.5</b> |
| CA Future Direction 5321 ..... | GAR Precision 1680         |                      |                 |
| <b>CONNALLY FOUNDATION 426</b> | CA Miss Power Fix 308      |                      |                 |
| Ruby Red of Conanga 436 .....  | Bon View New Design 878    |                      |                 |
|                                | Ruby of Conanga 430        |                      |                 |
| BR Midland .....               | Twin Valley Precision E161 |                      |                 |
| <b>MISS QUEEN JK 697</b>       | BR Royal Lass 7036-19      |                      |                 |
| Miss Queen JK 341 .....        | Connealy Forefront         |                      |                 |
|                                | Miss Queen JK 7202         |                      |                 |

### EXPECTED PROGENY DIFFERENCE

|                 |                |                  |                 |
|-----------------|----------------|------------------|-----------------|
| <b>BW I+3.3</b> | <b>WW I+56</b> | <b>MILK I+22</b> | <b>YW I+100</b> |
|-----------------|----------------|------------------|-----------------|

Dam's record: 1 calf ratio 110.

# 14

## KRAYE 2V1 MK 8263

|                                |                     |                      |                 |
|--------------------------------|---------------------|----------------------|-----------------|
| Calved 2/17/08                 |                     | Tattoo: 8263         |                 |
| <b>BW: 93</b>                  | <b>205 ADJ: 760</b> | <b>365 ADJ: 1245</b> | <b>ADG: 3.4</b> |
| Bon View New Design 1407 ..... | B/R New Design 036  |                      |                 |
| <b>RITO 2V1 OF 2536 1407</b>   | Bon View Pride 664  |                      |                 |
| GAR Precision 2536 .....       | GAR Precision 1680  |                      |                 |
|                                | GAR Ext 2104        |                      |                 |
| Marcys Powerstroke .....       | Schurrtop Supreme   |                      |                 |
| <b>MISS QUEEN MK 035</b>       | Marcys 91 Pride 2   |                      |                 |
| Miss Queen MK 1125 .....       | Gibb Saratoga 2197  |                      |                 |
|                                | Miss Queen MK 828   |                      |                 |

### EXPECTED PROGENY DIFFERENCE

|                 |                |                  |                |
|-----------------|----------------|------------------|----------------|
| <b>BW I+4.5</b> | <b>WW I+51</b> | <b>MILK I+21</b> | <b>YW I+94</b> |
|-----------------|----------------|------------------|----------------|

Dam's record: 6 calves ratio 103.



# 15

## KRAYE RIGHT TIME JK 811

|                                    |                          |                      |                 |
|------------------------------------|--------------------------|----------------------|-----------------|
| Calved 1/28/08                     |                          | Tattoo: 811          |                 |
| <b>BW: 88</b>                      | <b>205 ADJ: 774</b>      | <b>365 ADJ: 1256</b> | <b>ADG: 3.4</b> |
| Leachman Right Time .....          | N Bar Emulation Ext      |                      |                 |
| <b>HYLINE RIGHT TIME 338</b>       | Leachman Erica 0025      |                      |                 |
| Hyline Pride 265 .....             | Hyline SVF Traveler 0115 |                      |                 |
|                                    | Hyline Pride 870         |                      |                 |
| Plowman 1627 of Millbrae SAR ..... | DHD Traveler 6807        |                      |                 |
| <b>MISS BARBARAMERE JK 2154</b>    | MB Joanie 8E8 1627       |                      |                 |
| Miss Barbaramere JK 7257 .....     | Dameron Precedent        |                      |                 |
|                                    | Miss Barbaramere JK 4200 |                      |                 |

### EXPECTED PROGENY DIFFERENCE

|                 |                |                  |                |
|-----------------|----------------|------------------|----------------|
| <b>BW I+2.1</b> | <b>WW I+58</b> | <b>MILK I+17</b> | <b>YW I+96</b> |
|-----------------|----------------|------------------|----------------|

# 16

## KRAYE 2V1 DK 8299

|                                |                     |                      |                 |
|--------------------------------|---------------------|----------------------|-----------------|
| Calved 2/19/08                 |                     | Tattoo: 8299         |                 |
| <b>BW: 88</b>                  | <b>205 ADJ: 754</b> | <b>365 ADJ: 1216</b> | <b>ADG: 3.2</b> |
| Bon View New Design 1407 ..... | B/R New Design 036  |                      |                 |
| <b>RITO 2V1 OF 2536 1407</b>   | Bon View Pride 664  |                      |                 |
| GAR Precision 2536 .....       | GAR Precision 1680  |                      |                 |
|                                | GAR Ext 2104        |                      |                 |
| JD Traveler 034 .....          | California Traveler |                      |                 |
| <b>JD BLACKCAP 2001</b>        | JD Blackcap 8672    |                      |                 |
| JD Blackcap 0001 .....         | VDAR Lucys Boy      |                      |                 |
|                                | JD Blackcap 4001    |                      |                 |

### EXPECTED PROGENY DIFFERENCE

|                 |                |                  |                |
|-----------------|----------------|------------------|----------------|
| <b>BW I+2.0</b> | <b>WW I+52</b> | <b>MILK I+27</b> | <b>YW I+95</b> |
|-----------------|----------------|------------------|----------------|

Dam's record: 5 calves ratio 105. Recommended for larger heifers.

**L  
O  
T  
17**



**17**

**KRAYE NET WORTH JK 8222**

|                               |                     |                          |                 |
|-------------------------------|---------------------|--------------------------|-----------------|
|                               | Calved 2/14/08      | Tattoo: 8222             |                 |
| <b>BW: 92</b>                 | <b>205 ADJ: 759</b> | <b>365 ADJ: 1325</b>     | <b>ADG: 3.9</b> |
| SAV 8180 Traveler 004 .....   |                     | Sitz Traveler 8180       |                 |
| <b>SAV NET WORTH 4200</b>     |                     | Boyd Forever Lady 8003   |                 |
| SAV May 2410 .....            |                     | SAF 598 Bando 5175       |                 |
|                               |                     | SAV May 6269             |                 |
| Vermilion Dateline 7078 ..... |                     | Connealy Dateline        |                 |
| <b>MISS BURGESS JK 5228</b>   |                     | Vermilion Blackbird 5044 |                 |
| Miss Burgess JK 5119 .....    |                     | GDAR Rito 596 LT         |                 |
|                               |                     | Miss Burgess JK 620      |                 |

**EXPECTED PROGENY DIFFERENCE**

|                 |                |                  |                 |
|-----------------|----------------|------------------|-----------------|
| <b>BW I+5.0</b> | <b>WW I+57</b> | <b>MILK I+24</b> | <b>YW I+102</b> |
|-----------------|----------------|------------------|-----------------|

Dam's record: 2 calves ratio 113.

**L  
O  
T  
18**



**18**

**KRAYE RIGHT TIME JK 8107**

|                              |                     |                          |                 |
|------------------------------|---------------------|--------------------------|-----------------|
|                              | Calved 2/06/08      | Tattoo: 8107             |                 |
| <b>BW: 88</b>                | <b>205 ADJ: 753</b> | <b>365 ADJ: 1260</b>     | <b>ADG: 3.5</b> |
| Leachman Right Time .....    |                     | N Bar Emulation Ext      |                 |
| <b>HYLINE RIGHT TIME 338</b> |                     | Leachman Erica 0025      |                 |
| Hyline Pride 265 .....       |                     | Hyline SVF Traveler 0115 |                 |
|                              |                     | Hyline Pride 870         |                 |
| SAF Focus of ER .....        |                     | SAF Fame                 |                 |
| <b>IMPERIAL QUEEN BW 248</b> |                     | GDAR Forever Lady 246    |                 |
| Imperial Queen 031 .....     |                     | TC Stockman 365          |                 |
|                              |                     | Imperial Queen 690       |                 |

**EXPECTED PROGENY DIFFERENCE**

|                 |                |                  |                |
|-----------------|----------------|------------------|----------------|
| <b>BW I+3.2</b> | <b>WW I+57</b> | <b>MILK I+25</b> | <b>YW I+98</b> |
|-----------------|----------------|------------------|----------------|

Dam's record: 5 calves ratio 104.

**19**

**KRAYE ON TARGET JK 8282**

|                               |                     |                             |                 |
|-------------------------------|---------------------|-----------------------------|-----------------|
|                               | Calved 2/18/08      | Tattoo: 8282                |                 |
| <b>BW: 86</b>                 | <b>205 ADJ: 749</b> | <b>365 ADJ: 1272</b>        | <b>ADG: 3.6</b> |
| SAF 598 Bando 5175 .....      |                     | Bon View Bando 598          |                 |
| <b>BOYD ON TARGET 1083</b>    |                     | SAF Royal Lass 1002         |                 |
| Boyd Forever Lady 7095 .....  |                     | DHD Traveler 6807           |                 |
|                               |                     | SVF Forever Lady 57D        |                 |
| Sitz SLS Rainmaker 7596 ..... |                     | GDAR Rainmaker 340          |                 |
| <b>MISS LASSIE JK 038</b>     |                     | SLS Barbara Perfection 2571 |                 |
| Miss Lassie JK 8123 .....     |                     | QLC Oscar Y541E             |                 |
|                               |                     | Miss Lassie JK 462          |                 |

**EXPECTED PROGENY DIFFERENCE**

|                 |                |                  |                |
|-----------------|----------------|------------------|----------------|
| <b>BW I+3.1</b> | <b>WW I+50</b> | <b>MILK I+21</b> | <b>YW I+92</b> |
|-----------------|----------------|------------------|----------------|

Dam's record: 7 calves ratio 106. Dam is a Pathfinder cow.

20

**KRAYE MONEYMAKER DK 8110**

|                                  |                     |                            |                 |
|----------------------------------|---------------------|----------------------------|-----------------|
|                                  | Calved 2/06/08      | Tattoo: 8110               |                 |
| <b>BW: 100</b>                   | <b>205 ADJ: 745</b> | <b>365 ADJ: 1185</b>       | <b>ADG: 3.1</b> |
| Boyd on Target 1083 .....        |                     | SAF 598 Bando 5175         |                 |
| <b>STEVENSON MONEYMAKER R185</b> |                     | Boyd Forever Lady 7095     |                 |
| Stevenson Clova Pride L888 ..... |                     | VDAR Ambush 2478           |                 |
|                                  |                     | Stevenson Clova Pride 712H |                 |
| B/R New Design 036 .....         |                     | VDAR New Trend 315         |                 |
| <b>4 G RUBY 19</b>               |                     | B/R Blackcap Empress 76    |                 |
| HAR Ruby Miss H11 .....          |                     | QLC Emulation EXT P340D    |                 |
|                                  |                     | HAR Ruby D7                |                 |

**EXPECTED PROGENY DIFFERENCE**

|                 |                |                  |                |
|-----------------|----------------|------------------|----------------|
| <b>BW I+4.6</b> | <b>WW I+55</b> | <b>MILK I+19</b> | <b>YW I+95</b> |
|-----------------|----------------|------------------|----------------|

21

**KRAYE AMBUSH JK 8206**

|                                |                     |                             |                 |
|--------------------------------|---------------------|-----------------------------|-----------------|
|                                | Calved 2/12/08      | Tattoo: 8206                |                 |
| <b>BW: 87</b>                  | <b>205 ADJ: 739</b> | <b>365 ADJ: 1240</b>        | <b>ADG: 3.5</b> |
| Rockn D Ambush 1531 .....      |                     | Paramont Ambush 2172        |                 |
| <b>B/R AMBUSH 28</b>           |                     | MS Blackcap Band of RD 1301 |                 |
| B/R Ruby of Tiffany 8250 ..... |                     | N Bar Emulation EXT         |                 |
|                                |                     | B/R Ruby of Tiffany 5113    |                 |
| Hyline Right Time 338 .....    |                     | Leachman Right Time         |                 |
| <b>MISS ANN JK 4208</b>        |                     | Hyline Pride 265            |                 |
| Miss Ann JK 2302 .....         |                     | Basin Max 602C              |                 |
|                                |                     | Miss Ann JK 8119            |                 |

**EXPECTED PROGENY DIFFERENCE**

|                 |                |                  |                 |
|-----------------|----------------|------------------|-----------------|
| <b>BW I+2.1</b> | <b>WW I+57</b> | <b>MILK I+15</b> | <b>YW I+106</b> |
|-----------------|----------------|------------------|-----------------|

L  
O  
T

22

22

**KRAYE NETWORTH JK 8218**

|                               |                     |                          |                 |
|-------------------------------|---------------------|--------------------------|-----------------|
|                               | Calved 2/13/08      | Tattoo: 8218             |                 |
| <b>BW: 86</b>                 | <b>205 ADJ: 738</b> | <b>365 ADJ: 1258</b>     | <b>ADG: 3.6</b> |
| SAV 8180 Traveler 004 .....   |                     | Sitz Traveler 8180       |                 |
| <b>SAV NET WORTH 4200</b>     |                     | Boyd Forever Lady 8003   |                 |
| SAV May 2410 .....            |                     | SAF 598 Bando 5175       |                 |
|                               |                     | SAV May 6269             |                 |
| Vermilion Dateline 7078 ..... |                     | Connealy Dateline        |                 |
| <b>LASS JK 5239</b>           |                     | Vermilion Blackbird 5044 |                 |
| QLC B53 Lass D115H .....      |                     | Donamere 6T6 553         |                 |
|                               |                     | QLC B50 Lass A516D       |                 |

**EXPECTED PROGENY DIFFERENCE**

|                 |                |                  |                 |
|-----------------|----------------|------------------|-----------------|
| <b>BW I+4.6</b> | <b>WW I+56</b> | <b>MILK I+25</b> | <b>YW I+105</b> |
|-----------------|----------------|------------------|-----------------|

Dam's record: 2 calves ratio 105.

23

**KRAYE DECADE JK 8405**

|                            |                     |                          |                 |
|----------------------------|---------------------|--------------------------|-----------------|
|                            | Calved 3/13/08      | Tattoo: 8405             |                 |
| <b>BW: 70</b>              | <b>205 ADJ: 740</b> | <b>365 ADJ: 1162</b>     | <b>ADG: 3.0</b> |
| Lau Decade .....           |                     | CA Future Direction 5321 |                 |
| <b>4 G DECADE 6111</b>     |                     | LTVF Alliance JC 111     |                 |
| 4 G Mist 243 .....         |                     | Grandview Womack Direct  |                 |
|                            |                     | 4 G Mist 972             |                 |
| B/R New Frontier 095 ..... |                     | B/R New Design 036       |                 |
| <b>ELBA JK 4169</b>        |                     | White Fence Pride H1     |                 |
| JO Elba 752 .....          |                     | JO Super Systems 581     |                 |
|                            |                     | JO Elba 5127             |                 |

**EXPECTED PROGENY DIFFERENCE**

|                 |                |                  |                |
|-----------------|----------------|------------------|----------------|
| <b>BW I-1.8</b> | <b>WW I+53</b> | <b>MILK I+21</b> | <b>YW I+88</b> |
|-----------------|----------------|------------------|----------------|

Dam's record: 2 calves ratio 107. Recommended for heifers.

# 24

## KRAYE TRAVELER JK 8398

|                                    |                                       |                                      |                 |
|------------------------------------|---------------------------------------|--------------------------------------|-----------------|
| <b>BW: 83</b>                      | Calved 3/11/08<br><b>205 ADJ: 738</b> | Tattoo: 8398<br><b>365 ADJ: 1120</b> | <b>ADG: 2.7</b> |
| SAV 8180 Traveler 004 .....        | Sitz Traveler 8180                    | Boyd Forever Lady 8003               |                 |
| <b>STEPLADDER 004 TRAVELER 466</b> | Star EZ Bardot 615 .....              | GAR Sleep Easy 1009                  |                 |
| QLC Requisite .....                | Star Bardot 413                       | N Bar Emulation Ext                  |                 |
| <b>MISS PRIDE JK 609</b>           | Miss Pride JK 461 .....               | QLC A111 Pride T233X                 |                 |
|                                    |                                       | GDAR Traveler 71                     |                 |
|                                    |                                       | Miss Pride JK 232                    |                 |

### EXPECTED PROGENY DIFFERENCE

|                 |                |                  |                |
|-----------------|----------------|------------------|----------------|
| <b>BW I+1.0</b> | <b>WW I+46</b> | <b>MILK I+24</b> | <b>YW I+78</b> |
|-----------------|----------------|------------------|----------------|

Dam's record: 10 calves ratio 107. Great granddam is a Pathfinder cow.  
Recommended for heifers.

# 25

## KRAYE FOUNDATION JK 839

|                                |                                       |                                     |                 |
|--------------------------------|---------------------------------------|-------------------------------------|-----------------|
| <b>BW: 86</b>                  | Calved 2/01/08<br><b>205 ADJ: 741</b> | Tattoo: 839<br><b>365 ADJ: 1287</b> | <b>ADG: 3.8</b> |
| CA Future Direction 5321 ..... | GAR Precision 1680                    | CA Miss Power Fix 308               |                 |
| <b>CONNELLY FOUNDATION 426</b> | Ruby Red of Conanga 436 .....         | Bon View New Design 878             |                 |
| Bon View New Design 1407 ..... | B/R New Design 036                    | Bon View Pride 664                  |                 |
| <b>MISS QUEEN JK 6117</b>      | Miss Queen JK 211 .....               | B/R Destination 727                 |                 |
|                                |                                       | Miss Queen JK 766                   |                 |

### EXPECTED PROGENY DIFFERENCE

|                 |                |                  |                |
|-----------------|----------------|------------------|----------------|
| <b>BW I+2.5</b> | <b>WW I+52</b> | <b>MILK I+26</b> | <b>YW I+96</b> |
|-----------------|----------------|------------------|----------------|

Dam's record: 1 calf ratio 105.

# 26

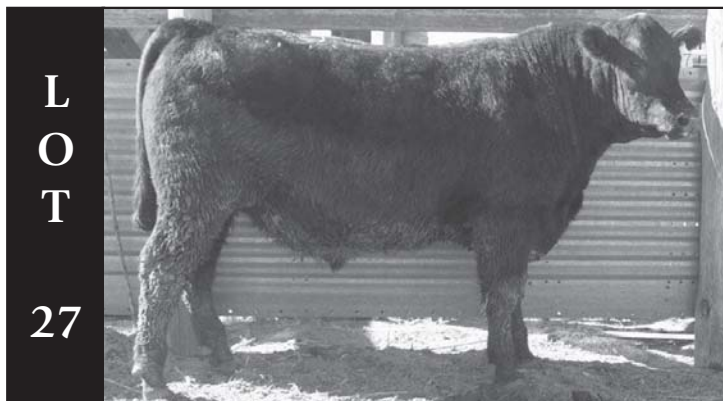
## KRAYE IMAGE MAKER JK 867

|                            |                                       |                                     |                 |
|----------------------------|---------------------------------------|-------------------------------------|-----------------|
| <b>BW: 84</b>              | Calved 2/03/08<br><b>205 ADJ: 742</b> | Tattoo: 867<br><b>365 ADJ: 1216</b> | <b>ADG: 3.3</b> |
| Hero 6267 of RR 2418 ..... | RR Hero 6267                          | RR Everelda Entense 0413            |                 |
| <b>HA IMAGE MAKER 0415</b> | HA Rito Blackcap 9038 .....           | H 96 Rito 2100 7371                 |                 |
| B/R New Frontier 095 ..... | B/R New Design 036                    | White Fence Pride H1                |                 |
| <b>MISS QUEEN JK 6233</b>  | Miss Queen JK 7202 .....              | Dameron Robust                      |                 |
|                            |                                       | Miss Queen JK 436                   |                 |

### EXPECTED PROGENY DIFFERENCE

|                 |                |                  |                |
|-----------------|----------------|------------------|----------------|
| <b>BW I+2.3</b> | <b>WW I+57</b> | <b>MILK I+28</b> | <b>YW I+98</b> |
|-----------------|----------------|------------------|----------------|

Dam's record: 1 calf ratio 105.



L  
O  
T

27

# 27

## KRAYE RIGHT TIME JK 8148

|                              |                                       |                                      |                 |
|------------------------------|---------------------------------------|--------------------------------------|-----------------|
| <b>BW: 88</b>                | Calved 2/08/08<br><b>205 ADJ: 739</b> | Tattoo: 8148<br><b>365 ADJ: 1309</b> | <b>ADG: 3.9</b> |
| Leachman Right Time .....    | N Bar Emulation Ext                   | Leachman Erica 0025                  |                 |
| <b>HYLINE RIGHT TIME 338</b> | Hyline Pride 265 .....                | Hyline SVF Traveler 0115             |                 |
| B/R Ambush 28 .....          | Rockn D Ambush 1531                   | B/R Ruby of Tiffany 8250             |                 |
| <b>MISS PRIDE JK 535</b>     | Miss Pride JK 3279 .....              | 4 G Precision 117                    |                 |
|                              |                                       | Miss Pride JK 069                    |                 |

### EXPECTED PROGENY DIFFERENCE

|                 |                |                  |                 |
|-----------------|----------------|------------------|-----------------|
| <b>BW I+3.6</b> | <b>WW I+58</b> | <b>MILK I+21</b> | <b>YW I+102</b> |
|-----------------|----------------|------------------|-----------------|

Dam's record: 2 calves ratio 98. Great granddam is a Pathfinder cow.

28

**KRAYE IMAGE MAKER JK 815**

|                            |                             |                          |                 |
|----------------------------|-----------------------------|--------------------------|-----------------|
|                            | Calved 1/29/08              | Tattoo: 815              |                 |
| <b>BW: 81</b>              | <b>205 ADJ: 741</b>         | <b>365 ADJ: 1179</b>     | <b>ADG: 3.1</b> |
|                            | Hero 6267 of RR 2418 .....  | RR Hero 6267             |                 |
| <b>HA IMAGE MAKER 0415</b> | HA Rito Blackcap 9038 ..... | RR Everelda Entense 0413 |                 |
|                            |                             | H 96 Rito 2100 7371      |                 |
|                            |                             | H 96 Blackcap 3835       |                 |
|                            | Boyd New Day 8005 .....     | AAR New Trend            |                 |
| <b>MISS EVELYN JK 6261</b> |                             | SVF Forever Lady 57D     |                 |
|                            | Miss Evelyn JK 397 .....    | B/R New Frontier 095     |                 |
|                            |                             | Miss Evelyn JK 6115      |                 |

**EXPECTED PROGENY DIFFERENCE**

|                 |                |                  |                 |
|-----------------|----------------|------------------|-----------------|
| <b>BW I+2.2</b> | <b>WW I+57</b> | <b>MILK I+29</b> | <b>YW I+100</b> |
|-----------------|----------------|------------------|-----------------|

Dam's record: 1 calf ratio 105. Recommended for heifers.



**L  
O  
T  
29**

29

**KRAYE ON TARGET JK 8283**

|                            |                                  |                        |                 |
|----------------------------|----------------------------------|------------------------|-----------------|
|                            | Calved 2/18/08                   | Tattoo: 8283           |                 |
| <b>BW: 98</b>              | <b>205 ADJ: 733</b>              | <b>365 ADJ: 1192</b>   | <b>ADG: 3.3</b> |
|                            | SAF 598 Bando 5175 .....         | Bon View Bando 598     |                 |
| <b>BOYD ON TARGET 1083</b> | Boyd Forever Lady 7095 .....     | SAF Royal Lass 1002    |                 |
|                            |                                  | DHD Traveler 6807      |                 |
|                            | Stepladder Focal Point 906 ..... | SVF Forever Lady 57D   |                 |
| <b>ERICA JK 1156</b>       |                                  | SAF Focus of ER        |                 |
|                            | Erica FK 9147 .....              | Star K Lassie 6105     |                 |
|                            |                                  | QLC B65 EXT P340 E144H |                 |
|                            |                                  | Erica FK 788           |                 |

**EXPECTED PROGENY DIFFERENCE**

|                 |                |                  |                 |
|-----------------|----------------|------------------|-----------------|
| <b>BW I+3.8</b> | <b>WW I+56</b> | <b>MILK I+21</b> | <b>YW I+106</b> |
|-----------------|----------------|------------------|-----------------|

Dam's record: 5 calves ratio 106. Dam is a Pathfinder cow.



**L  
O  
T  
30**

30

**KRAYE RITO 416 FK 8300**

|                                   |                                 |                             |                 |
|-----------------------------------|---------------------------------|-----------------------------|-----------------|
|                                   | Calved 2/19/08                  | Tattoo: 8300                |                 |
| <b>BW: 99</b>                     | <b>205 ADJ: 731</b>             | <b>365 ADJ: 1297</b>        | <b>ADG: 3.9</b> |
|                                   | Rito 112 of 2536 Rito 616 ..... | Rito 616 of 4B20 6807       |                 |
| <b>TC RITO 416</b>                | TC Chloe 2056 .....             | GAR Precision 2536          |                 |
|                                   |                                 | Connealy Forefront          |                 |
|                                   | Homestead Blockbuster 409 ..... | TC Chloe 6010               |                 |
| <b>IMPERIAL QUEEN LADY FK 357</b> |                                 | Bon View Bando 598          |                 |
|                                   | Imperial Queen Lady K981 .....  | IF Scotchcap Erica 832      |                 |
|                                   |                                 | Krugerrand of Donamere 490  |                 |
|                                   |                                 | Imperial Queen Lady T71 375 |                 |

**EXPECTED PROGENY DIFFERENCE**

|                 |                |                  |                |
|-----------------|----------------|------------------|----------------|
| <b>BW I+2.7</b> | <b>WW I+51</b> | <b>MILK I+26</b> | <b>YW I+92</b> |
|-----------------|----------------|------------------|----------------|

Dam's record: 4 calves ratio 105. Dam &amp; great granddam are Pathfinder cows.

31

**KRAYE 2V1 JK 8376**

| Calved 3/03/08                |                            | Tattoo: 8376           |                 |
|-------------------------------|----------------------------|------------------------|-----------------|
| <b>BW: 89</b>                 | <b>205 ADJ: 735</b>        | <b>365 ADJ: 1170</b>   | <b>ADG: 3.1</b> |
| Rito 2V1 of 2536 1407 .....   | Bon View New Design 1407   | GAR Precision 2536     |                 |
| <b>RTP STAR OF 2V1 5072</b>   | RTP New Playmate 072 ..... | EAF New Trend 36 107   |                 |
| Grandview Womack Direct ..... | RTP Playmate 72            | B/R New Design 036     |                 |
| <b>MISS BURGESS JK 5264</b>   | Miss Burgess JK 668 .....  | Mengs Miss Skymere 78B |                 |
|                               |                            | QLC Requisite          |                 |
|                               |                            | Miss Burgess JK 3117   |                 |

**EXPECTED PROGENY DIFFERENCE**

|                 |                |                  |                |
|-----------------|----------------|------------------|----------------|
| <b>BW I+3.7</b> | <b>WW I+51</b> | <b>MILK I+22</b> | <b>YW I+83</b> |
|-----------------|----------------|------------------|----------------|

Dam's record: 2 calves ratio 107. Great granddam is a Pathfinder cow.

32

**KRAYE 2V1 JK 8272**

| Calved 2/17/08                 |                          | Tattoo: 8272          |                 |
|--------------------------------|--------------------------|-----------------------|-----------------|
| <b>BW: 88</b>                  | <b>205 ADJ: 731</b>      | <b>365 ADJ: 1334</b>  | <b>ADG: 4.1</b> |
| Bon View New Design 1407 ..... | B/R New Design 036       | Bon View Pride 664    |                 |
| <b>RITO 2V1 OF 2536 1407</b>   | GAR Precision 2536 ..... | GAR Precision 1680    |                 |
| Amen 243 Vision 709 .....      | GAR Ext 2104             | VDAR Vision 243       |                 |
| <b>MISS WIX JK 3151</b>        | Miss Wix FK 9294 .....   | Amen Duchess Lass 642 |                 |
|                                |                          | QLC B61 Merger A562H  |                 |
|                                |                          | Miss Wix FK 6103      |                 |

**EXPECTED PROGENY DIFFERENCE**

|                 |                |                  |                |
|-----------------|----------------|------------------|----------------|
| <b>BW I+3.3</b> | <b>WW I+50</b> | <b>MILK I+29</b> | <b>YW I+96</b> |
|-----------------|----------------|------------------|----------------|

Dam's record: 4 calves ratio 105. Dam &amp; granddam are Pathfinder cows.

33

**KRAYE REGULATOR DK 806**

| Calved 1/27/08               |                              | Tattoo: 806                |                 |
|------------------------------|------------------------------|----------------------------|-----------------|
| <b>BW: 86</b>                | <b>205 ADJ: 725</b>          | <b>365 ADJ: 1167</b>       | <b>ADG: 3.1</b> |
| Ranger G 1720 .....          | GAR Precision 1680           | Sitz Everelda Entense 1137 |                 |
| <b>4 G REGULATOR</b>         | 4 G Dixie Erica 732 .....    | B/R New Design 036         |                 |
| HA Power Alliance 1025 ..... | Dixie Erica of 4G 91C        | Sitz Alliance 6595         |                 |
| <b>4 G LADY 675</b>          | E&B Lady 131 Royce 997 ..... | HA Rito Lady 4167          |                 |
|                              |                              | GDAR Royce 131             |                 |
|                              |                              | Lady Scotch Traveler 345   |                 |

**EXPECTED PROGENY DIFFERENCE**

|                 |                |                  |                |
|-----------------|----------------|------------------|----------------|
| <b>BW I+3.6</b> | <b>WW I+56</b> | <b>MILK I+22</b> | <b>YW I+91</b> |
|-----------------|----------------|------------------|----------------|

Dam's record: 1 calf ratio 103.

34

**KRAYE IN FOCUS JK 8141**

| Calved 2/08/08           |                          | Tattoo: 8141          |                 |
|--------------------------|--------------------------|-----------------------|-----------------|
| <b>BW: 94</b>            | <b>205 ADJ: 732</b>      | <b>365 ADJ: 1201</b>  | <b>ADG: 3.3</b> |
| SAF Focus of ER .....    | SAF Fame                 | GDAR Forever Lady 246 |                 |
| <b>MYTTY IN FOCUS</b>    | Mytty Countess 906 ..... | Sitz Alliance 6595    |                 |
| VDAR Bando 97 .....      | Baldrige Countess 357    | Tehama Bando 155      |                 |
| <b>MATILDA OF JK 108</b> | Matilda of JK 915 .....  | VDAR Beauty 12        |                 |
|                          |                          | N Bar Emulation Ext   |                 |
|                          |                          | Matilda of JK 7186    |                 |

**EXPECTED PROGENY DIFFERENCE**

|                 |                |                  |                |
|-----------------|----------------|------------------|----------------|
| <b>BW I+1.5</b> | <b>WW I+50</b> | <b>MILK I+26</b> | <b>YW I+89</b> |
|-----------------|----------------|------------------|----------------|

Dam's record: 6 calves ratio 109. Dam is a Pathfinder cow.

Recommended for heifers.

35

**KRAYE 1961 JK 828**

| Calved 1/31/08              |                             | Tattoo: 828            |                 |
|-----------------------------|-----------------------------|------------------------|-----------------|
| <b>BW: 86</b>               | <b>205 ADJ: 729</b>         | <b>365 ADJ: 1262</b>   | <b>ADG: 3.7</b> |
| SAF 598 Bando 5175 .....    | Bon View Bando 598          | SAF Royal Lass 1002    |                 |
| <b>HSAF BANDO 1961</b>      | JKS Miss Cheyenne 196 ..... | N Bar Emulation Ext    |                 |
| SAV 8180 Traveler 004 ..... | Magic Meadow Miss Cheyenne  | Sitz Traveler 8180     |                 |
| <b>MISS BURGESS JK 628</b>  | Miss Burgess JK 4248 .....  | Boyd Forever Lady 8003 |                 |
|                             |                             | Hyline Right Time 338  |                 |
|                             |                             | Miss Burgess JK 939    |                 |

**EXPECTED PROGENY DIFFERENCE**

|                 |                |                  |                 |
|-----------------|----------------|------------------|-----------------|
| <b>BW I+3.1</b> | <b>WW I+55</b> | <b>MILK I+26</b> | <b>YW I+101</b> |
|-----------------|----------------|------------------|-----------------|

Dam's record: 1 calf ratio 103.

# 36

## KRAYE DECADE JK 8400

|                  |                                       |                                      |                 |
|------------------|---------------------------------------|--------------------------------------|-----------------|
| <b>BW: 88</b>    | Calved 3/11/08<br><b>205 ADJ: 726</b> | Tattoo: 8400<br><b>365 ADJ: 1281</b> | <b>ADG: 3.8</b> |
| 4 G DECADE 6111  | Lau Decade .....                      | CA Future Direction 5321             |                 |
|                  | 4 G Mist 243 .....                    | LVVV Alliance JC 11                  |                 |
| MISS ELBA JK 484 | Vermilion Dateline 7078 .....         | Grandview Womack Direct              |                 |
|                  | Miss Elba FK 9220 .....               | 4 G Mist 972                         |                 |
|                  |                                       | Connealy Dateline                    |                 |
|                  |                                       | Vermilion Blackbird 5044             |                 |
|                  |                                       | KD Cappuccino of Krugerrand          |                 |
|                  |                                       | Miss Elba FK 419                     |                 |

### EXPECTED PROGENY DIFFERENCE

|          |         |           |         |
|----------|---------|-----------|---------|
| BW I+3.0 | WW I+56 | MILK I+22 | YW I+96 |
|----------|---------|-----------|---------|

Dam's record: 3 calves ratio 105. Granddam & great granddam are Pathfinder cows.

# 37

## KRAYE FORESIGHT JK 8330

|                         |                                       |                                      |                 |
|-------------------------|---------------------------------------|--------------------------------------|-----------------|
| <b>BW: 87</b>           | Calved 2/22/08<br><b>205 ADJ: 726</b> | Tattoo: 8330<br><b>365 ADJ: 1121</b> | <b>ADG: 2.8</b> |
| WOODHILL FORESIGHT      | Papa Forte 1921 .....                 | Papa Optima 9818                     |                 |
|                         | Bon View Gammer 85 .....              | Papa Envious Blackbird 8832          |                 |
| IMPERIAL QUEEN LADY 061 | B/R New Design 036 .....              | Bon View Bando 598                   |                 |
|                         | Imperial Queen Lady 81E .....         | Bon View Gammer 233                  |                 |
|                         |                                       | VDAR New Trend 315                   |                 |
|                         |                                       | B/R Blackcap Empress 76              |                 |
|                         |                                       | N Bar Emulation Ext                  |                 |
|                         |                                       | Imperial Queen Lady R 411            |                 |

### EXPECTED PROGENY DIFFERENCE

|          |         |           |         |
|----------|---------|-----------|---------|
| BW I+2.8 | WW I+52 | MILK I+24 | YW I+93 |
|----------|---------|-----------|---------|

Dam's record: 7 calves ratio 106.

# 38

## KRAYE 2 V1 JK 8112

|                       |                                       |                                      |                 |
|-----------------------|---------------------------------------|--------------------------------------|-----------------|
| <b>BW: 86</b>         | Calved 2/06/08<br><b>205 ADJ: 723</b> | Tattoo: 8112<br><b>365 ADJ: 1235</b> | <b>ADG: 3.6</b> |
| RITO 2V1 OF 2536 1407 | Bon View New Design 1407 .....        | B/R New Design 036                   |                 |
|                       | GAR Precision 2536 .....              | Bon View Pride 664                   |                 |
| PRIDE OF JK 214       | White Oak Precise 6002 .....          | GAR Precision 1680                   |                 |
|                       | Pride of JK 0141 .....                | GAR Ext 2104                         |                 |
|                       |                                       | GAR Precision 1680                   |                 |
|                       |                                       | Stone Gate Jessie                    |                 |
|                       |                                       | War Command 7131 3247                |                 |
|                       |                                       | Pride of JK 6280                     |                 |

### EXPECTED PROGENY DIFFERENCE

|          |         |           |         |
|----------|---------|-----------|---------|
| BW I+2.6 | WW I+49 | MILK I+21 | YW I+90 |
|----------|---------|-----------|---------|

Dam's record: 7 calves ratio 106.



L  
O  
T

39

# 39

## KRAYE 2V1 JK 8162

|                       |                                       |                                      |                 |
|-----------------------|---------------------------------------|--------------------------------------|-----------------|
| <b>BW: 80</b>         | Calved 2/09/08<br><b>205 ADJ: 722</b> | Tattoo: 8162<br><b>365 ADJ: 1261</b> | <b>ADG: 3.7</b> |
| RITO 2V1 OF 2536 1407 | Bon View New Design 1407 .....        | B/R New Design 036                   |                 |
|                       | GAR Precision 2536 .....              | Bon View Pride 664                   |                 |
| MISS BURGESS JK 566   | TC Freedom 104 .....                  | GAR Precision 1680                   |                 |
|                       | Miss Burgess JK 939 .....             | GAR Ext 2104                         |                 |
|                       |                                       | Connealy Forefront                   |                 |
|                       |                                       | TC Ruby 9095                         |                 |
|                       |                                       | Sitz Alliance 6595                   |                 |
|                       |                                       | Miss Burgess JK 725                  |                 |

### EXPECTED PROGENY DIFFERENCE

|          |         |           |          |
|----------|---------|-----------|----------|
| BW I+2.3 | WW I+56 | MILK I+26 | YW I+105 |
|----------|---------|-----------|----------|

Dam's record: 2 calves ratio 101. Great granddam is a Pathfinder cow.

## 40

## KRAYE 1961 JK 8203

| Calved 2/14/08                 |                            | Tattoo: 8203  |          |
|--------------------------------|----------------------------|---------------|----------|
| BW: 87                         | 205 ADJ: 718               | 365 ADJ: 1238 | ADG: 3.6 |
| SAF 598 Bando 5175 .....       | Bon View Bando 598         |               |          |
| <b>HSAF BANDO 1961</b>         | SAF Royal Lass 1002        |               |          |
| JKS Miss Cheyenne 196 .....    | N Bar Emulation Ext        |               |          |
| Bon View New Design 1407 ..... | Magic Meadow Miss Cheyenne |               |          |
| <b>MISS MATILDA JK 502</b>     | B/R New Design 036         |               |          |
| Miss Matilda JK 016 .....      | Bon View Pride 664         |               |          |
|                                | SAF Fame                   |               |          |
|                                | Miss Matilda JK 881        |               |          |

## EXPECTED PROGENY DIFFERENCE

|          |         |           |         |
|----------|---------|-----------|---------|
| BW I+2.0 | WW I+53 | MILK I+23 | YW I+95 |
|----------|---------|-----------|---------|

Recommended for larger heifers.

## 41

## KRAYE FORESIGHT JK 897

| Calved 2/05/08                 |                             | Tattoo: 897   |          |
|--------------------------------|-----------------------------|---------------|----------|
| BW: 87                         | 205 ADJ: 716                | 365 ADJ: 1156 | ADG: 3.1 |
| Papa Forte 1921 .....          | Papa Optima 9818            |               |          |
| <b>WOODHILL FORESIGHT</b>      | Papa Envious Blackbird 8832 |               |          |
| Bon View Gammer 85 .....       | Bon View Bando 598          |               |          |
| Grandview Womack Direct .....  | Bon View Gammer 233         |               |          |
| <b>IMPERIAL QUEEN LADY 386</b> | B/R New Design 036          |               |          |
| Imperial Queen Lady 911 .....  | Mengs Miss SKymere 78B      |               |          |
|                                | VDAR Lucys Boy              |               |          |
|                                | Imperial Queen Lady 850     |               |          |

## EXPECTED PROGENY DIFFERENCE

|          |         |           |         |
|----------|---------|-----------|---------|
| BW I+3.5 | WW I+51 | MILK I+24 | YW I+90 |
|----------|---------|-----------|---------|

Dam's record: 4 calves ratio 107. Dam is a Pathfinder cow.

## 42

## KRAYE AMBUSH JK 8261

| Calved 2/17/08                 |                             | Tattoo: 8261  |          |
|--------------------------------|-----------------------------|---------------|----------|
| BW: 99                         | 205 ADJ: 716                | 365 ADJ: 1158 | ADG: 3.1 |
| Rockn D Ambush 1531 .....      | Paramont Ambush 2172        |               |          |
| <b>B/R AMBUSH 28</b>           | MS Blackcap Band of RD 1301 |               |          |
| B/R Ruby of Tiffany 8250 ..... | N Bar Emulation EXT         |               |          |
| Bon View New Design 1407 ..... | B/R Ruby of Tiffany 5113    |               |          |
| <b>BLACKCAP OF JK 446</b>      | B/R New Design 036          |               |          |
| Blackcap of JK 2299 .....      | Bon View Pride 664          |               |          |
|                                | Dameron Fame 979            |               |          |
|                                | Blackcap of JK 9247         |               |          |

## EXPECTED PROGENY DIFFERENCE

|          |         |           |         |
|----------|---------|-----------|---------|
| BW I+4.2 | WW I+49 | MILK I+18 | YW I+94 |
|----------|---------|-----------|---------|

Dam's record: 3 calves ratio 102. Great granddam is a Pathfinder cow.

## 43

## KRAYE IMAGE MAKER JK 8287

| Calved 2/18/08              |                          | Tattoo: 8287  |          |
|-----------------------------|--------------------------|---------------|----------|
| BW: 87                      | 205 ADJ: 716             | 365 ADJ: 1142 | ADG: 3.0 |
| Hero 6267 of RR 2418 .....  | RR Hero 6267             |               |          |
| <b>HA IMAGE MAKER 0415</b>  | RR Everelda Entense 0413 |               |          |
| HA Rito Blackcap 9038 ..... | H 96 Rito 2100 7371      |               |          |
| KM Keystone 1913 .....      | H 96 Blackcap 3835       |               |          |
| <b>BLACKCAP JK 686</b>      | CA Future Direction 5321 |               |          |
| Blackcap JK 466 .....       | KM Blackcap 1011         |               |          |
|                             | B/R Ambush 28            |               |          |
|                             | Blackcap JK 2234         |               |          |

## EXPECTED PROGENY DIFFERENCE

|          |         |           |         |
|----------|---------|-----------|---------|
| BW I+3.0 | WW I+56 | MILK I+29 | YW I+94 |
|----------|---------|-----------|---------|

Dam's record: 1 calf ratio 102.

## 44

## KRAYE YUKON JK 8184

| Calved 2/11/08            |                            | Tattoo: 8184  |          |
|---------------------------|----------------------------|---------------|----------|
| BW: 93                    | 205 ADJ: 722               | 365 ADJ: 1264 | ADG: 3.7 |
| A&B Yukon 7150 .....      | Krugerrand of Donamere 490 |               |          |
| <b>A&amp;B YUKON 2115</b> | A&B Queen 4173             |               |          |
| A&b Annie 4008 .....      | N Bar Emulation Ext        |               |          |
| GAR Grid Maker .....      | A&b Rito Annie 2031        |               |          |
| <b>MISS QUEEN JK 5185</b> | GDAR Traveler 044          |               |          |
| Miss Queen JG 6406 .....  | GAR Precision 2536         |               |          |
|                           | QLC Requisite              |               |          |
|                           | Miss Queen JG 3206         |               |          |

## EXPECTED PROGENY DIFFERENCE

|          |         |           |          |
|----------|---------|-----------|----------|
| BW I+4.5 | WW I+61 | MILK I+13 | YW I+111 |
|----------|---------|-----------|----------|

Dam's record: 2 calves ratio 98.

# 45

## KRAYE ON TARGET JK 8142

|                               |                     |                       |                 |
|-------------------------------|---------------------|-----------------------|-----------------|
|                               | Calved 2/08/08      | Tattoo: 8142          |                 |
| <b>BW: 93</b>                 | <b>205 ADJ: 718</b> | <b>365 ADJ: 12 30</b> | <b>ADG: 3.6</b> |
| SAF 598 Bando 5175 .....      |                     | Bon View Bando 598    |                 |
| <b>BOYD ON TARGET 1083</b>    |                     | SAF Royal Lass 1002   |                 |
| Boyd Forever Lady 7095 .....  |                     | DHD Traveler 6807     |                 |
|                               |                     | SVF Forever Lady 57D  |                 |
| B/R New Frontier 095 .....    |                     | B/R New Design 036    |                 |
| <b>MISS BLACKBIRD JK 3139</b> |                     | White Fence Pride H1  |                 |
| Miss Blackbird JK 617 .....   |                     | QLC Krugerrand Y118D  |                 |
|                               |                     | Miss Sara MK 867      |                 |

### EXPECTED PROGENY DIFFERENCE

|                 |                |                  |                |
|-----------------|----------------|------------------|----------------|
| <b>BW I+2.7</b> | <b>WW I+46</b> | <b>MILK I+22</b> | <b>YW I+90</b> |
|-----------------|----------------|------------------|----------------|

Dam's record: 4 calves ratio 105. Dam & granddam are Pathfinder cows.

# 46

## KRAYE 2V1 JK 8136

|                                |                     |                       |                 |
|--------------------------------|---------------------|-----------------------|-----------------|
|                                | Calved 2/07/08      | Tattoo: 8136          |                 |
| <b>BW: 87</b>                  | <b>205 ADJ: 710</b> | <b>365 ADJ: 12 14</b> | <b>ADG: 3.5</b> |
| Bon View New Design 1407 ..... |                     | B/R New Design 036    |                 |
| <b>RITO 2V1 OF 2536 1407</b>   |                     | Bon View Pride 664    |                 |
| GAR Precision 2536 .....       |                     | GAR Precision 1680    |                 |
|                                |                     | GAR Ext 2104          |                 |
| TC Freedom 104 .....           |                     | Connealy Forefront    |                 |
| <b>ERICA JK 5215</b>           |                     | TC Ruby 9095          |                 |
| Erica JK 059 .....             |                     | California Traveler   |                 |
|                                |                     | JD Erica 8671         |                 |

### EXPECTED PROGENY DIFFERENCE

|                 |                |                  |                |
|-----------------|----------------|------------------|----------------|
| <b>BW I+3.0</b> | <b>WW I+54</b> | <b>MILK I+22</b> | <b>YW I+99</b> |
|-----------------|----------------|------------------|----------------|



# 47

## KRAYE RIGHT TIME JK 8128

|                              |                     |                          |                 |
|------------------------------|---------------------|--------------------------|-----------------|
|                              | Calved 2/07/08      | Tattoo: 8128             |                 |
| <b>BW: 77</b>                | <b>205 ADJ: 711</b> | <b>365 ADJ: 12 31</b>    | <b>ADG: 3.6</b> |
| Leachman Right Time .....    |                     | N Bar Emulation Ext      |                 |
| <b>HYLINE RIGHT TIME 338</b> |                     | Leachman Erica 0025      |                 |
| Hyline Pride 265 .....       |                     | Hyline SVF Traveler 0115 |                 |
|                              |                     | Hyline Pride 870         |                 |
| Marcys Powerstroke .....     |                     | Schurrtop Supreme        |                 |
| <b>MISS PRIDE JK 069</b>     |                     | Marcys 91 Pride 2        |                 |
| Miss Pride JK 232 .....      |                     | QLC Mister T             |                 |
|                              |                     | Miss Pride JK 078        |                 |

### EXPECTED PROGENY DIFFERENCE

|                 |                |                  |                |
|-----------------|----------------|------------------|----------------|
| <b>BW I+1.9</b> | <b>WW I+50</b> | <b>MILK I+26</b> | <b>YW I+87</b> |
|-----------------|----------------|------------------|----------------|

Dam's record: 7 calves ratio 110. Dam & granddam are Pathfinder cows.

# 48

## KRAYE DECADE JK 8363

|                               |                     |                          |                 |
|-------------------------------|---------------------|--------------------------|-----------------|
|                               | Calved 2/27/08      | Tattoo: 8363             |                 |
| <b>BW: 88</b>                 | <b>205 ADJ: 715</b> | <b>365 ADJ: 12 27</b>    | <b>ADG: 3.5</b> |
| Lau Decade .....              |                     | CA Future Direction 5321 |                 |
| <b>4 G DECADE 6111</b>        |                     | LUVF Alliance JC 111     |                 |
| 4 G Mist 243 .....            |                     | Grandview Womack Direct  |                 |
|                               |                     | 4 G Mist 972             |                 |
| Vermilion Dateline 7078 ..... |                     | Connealy Dateline        |                 |
| <b>MISS QUEEN JK 2111</b>     |                     | Vermilion Blackbird 5044 |                 |
| Miss Hi Point JK 2138 .....   |                     | CH High Point 9085       |                 |
|                               |                     | Miss Sara TJK 844        |                 |

### EXPECTED PROGENY DIFFERENCE

|                 |                |                  |                |
|-----------------|----------------|------------------|----------------|
| <b>BW I+3.2</b> | <b>WW I+55</b> | <b>MILK I+20</b> | <b>YW I+98</b> |
|-----------------|----------------|------------------|----------------|

Dam's record: 4 calves ratio 103. Granddam is a Pathfinder cow.

# 49

## KRAYE IN FOCUS JK 847

Calved 2/02/08 Tattoo: 847  
 BW: 77 205 ADJ: 712 365 ADJ: 1174 ADG: 3.2

|                             |                         |
|-----------------------------|-------------------------|
| SAF Focus of ER .....       | SAF Fame                |
| <b>MYTTY IN FOCUS</b>       | GDAR Forever Lady 246   |
| Mytty Countess 906 .....    | Sitz Alliance 6595      |
|                             | Baldridge Countess 357  |
| Connealy VRD 869 .....      | Vermilion Dateline 7078 |
| <b>MISS BURGESS JK 6125</b> | Eura Cap of Conanga     |
| Miss Burgess JK 176 .....   | HAR New Design H81      |
|                             | Miss Burgess JK 5119    |

### EXPECTED PROGENY DIFFERENCE

BW I+0.9 WW I+51 MILK I+23 YW I+92

Dam's record: 1 calf ratio 101. Recommended for heifers.

# 50

## KRAYE 2V1 JK 8380

Calved 3/04/08 Tattoo: 8380  
 BW: 91 205 ADJ: 712 365 ADJ: 1272 ADG: 3.9

|                             |                          |
|-----------------------------|--------------------------|
| Rito 2V1 of 2536 1407 ..... | Bon Vlew New Design 1407 |
| <b>RTP STAR OF 2V1 5072</b> | GAR Precision 2536       |
| RTP New Playmate 072 .....  | EAF New Trend 36 107     |
|                             | RTP Playmate 72          |
| B/R New Frontier 095 .....  | B/R New Design 036       |
| <b>MISS SARA JK 3209</b>    | White Fence Pride H1     |
| Miss Hi Point JK 9132 ..... | War Command 7131 3247    |
|                             | Miss Hi Point JK 2138    |

### EXPECTED PROGENY DIFFERENCE

BW I+3.0 WW I+50 MILK I+18 YW I+91

Dam's record: 4 calves ratio 98. Great granddam is a Pathfinder cow.



# 51

## KRAYE IN FOCUS JK 856

Calved 2/02/08 Tattoo: 856  
 BW: 82 205 ADJ: 712 365 ADJ: 1237 ADG: 3.6

|                              |                         |
|------------------------------|-------------------------|
| SAF Focus of ER .....        | SAF Fame                |
| <b>MYTTY IN FOCUS</b>        | GDAR Forever Lady 246   |
| Mytty Countess 906 .....     | Sitz Alliance 6595      |
|                              | Baldridge Countess 357  |
| WAR Alliance 9126 6006 ..... | Sitz Alliance 6595      |
| <b>PRIDE OF JK 618</b>       | WAR Bando 6006 598 4053 |
| Pride of JK 4106 .....       | Dameron VRD 237         |
|                              | Pride of JK 1100        |

### EXPECTED PROGENY DIFFERENCE

BW I+0.9 WW I+54 MILK I+24 YW I+101

Dam's record: 1 calf ratio 101. Recommended for heifers.

# 52

## KRAYE 2V1 JK 876

Calved 2/04/08 Tattoo: 876  
 BW: 88 205 ADJ: 711 365 ADJ: 1233 ADG: 3.6

|                                |                           |
|--------------------------------|---------------------------|
| Bon View New Design 1407 ..... | B/R New Design 036        |
| <b>RITO 2V1 OF 2536 1407</b>   | Bon View Pride 664        |
| GAR Precision 2536 .....       | GAR Precision 1680        |
|                                | GAR Ext 2104              |
| TC Freedom 104 .....           | Connealy Forefront        |
| <b>MISS TREND LADY JK 553</b>  | TC Ruby 9095              |
| TR Miss Trendy Lady T247 ..... | TR Scotch Cap 1483 T957   |
|                                | TR Miss Max Cap 1483 T749 |

### EXPECTED PROGENY DIFFERENCE

BW I+4.0 WW I+54 MILK I+24 YW I+101

Dam's record: 2 calves ratio 102.

# 53

## KRAYE IN FOCUS JK 859

Calved 2/03/08 Tattoo: 859  
**BW: 88**      **205 ADJ: 712**      **365 ADJ: 1235**      **ADG: 3.6**

|                          |                         |
|--------------------------|-------------------------|
| SAF Focus of ER .....    | SAF Fame                |
| <b>MYTTY IN FOCUS</b>    | GDAR Forever Lady 246   |
| Mytty Countess 906 ..... | Sitz Alliance 6595      |
|                          | Baldrige Countess 357   |
| Connealy VRD 869 .....   | Vermilion Dateline 7078 |
| <b>Q LADY JK 6204</b>    | Eura Cap of Conanga     |
| Q Lady 1N92 of TM .....  | TM Online 8X6           |
|                          | Q Lady 4 of TM          |

### EXPECTED PROGENY DIFFERENCE

**BW I+2.3**      **WW I+52**      **MILK I+22**      **YW I+94**

Dam's record: 1 calf ratio 101. Granddam is a Pathfinder cow.  
 Recommended for larger heifers.

# 54

## KRAYE YUKON JK 8362

Calved 2/27/08 Tattoo: 8362  
**BW: 100**      **205 ADJ: 714**      **365 ADJ: 1252**      **ADG: 3.5**

|                              |                            |
|------------------------------|----------------------------|
| A&B Yukon 7150 .....         | Krugerrand of Donamere 490 |
| <b>A&amp;B YUKON 2115</b>    | A&B Queen 4173             |
| A&b Annie 4008 .....         | N Bar Emulation Ext        |
|                              | A&b Rito Annie 2031        |
| SBH Escalade 9099 .....      | Connealy Kincaid           |
| <b>MISS NOBLEMAN JK 2258</b> | SBH Mergers Molly 7099     |
| Miss Nobleman FK 382 .....   | Leachman Prompter          |
|                              | Miss Nobleman FK 372       |

### EXPECTED PROGENY DIFFERENCE

**BW I+4.0**      **WW I+53**      **MILK I+12**      **YW I+93**

Dam's record: 5 calves ratio 98.

# 55

## KRAYE RITO 416 JK 8340

Calved 2/23/08 Tattoo: 8340  
**BW: 84**      **205 ADJ: 710**      **365 ADJ: 1288**      **ADG: 4.0**

|                                 |                       |
|---------------------------------|-----------------------|
| Rito 1I2 of 2536 Rito 616 ..... | Rito 616 of 4B20 6807 |
| <b>TC RITO 416</b>              | GAR Precision 2536    |
| TC Chloe 2056 .....             | Connealy Forefront    |
|                                 | TC Chloe 6010         |
| Bon View New Design 878 .....   | B/R New Design 036    |
| <b>BLACKBIRD JG 2157</b>        | Bon View Gammer 85    |
| Blackbird JG 402 .....          | Gibb Dividend 2132    |
|                                 | DHE Karama 64         |

### EXPECTED PROGENY DIFFERENCE

**BW I+0.2**      **WW I+45**      **MILK I+25**      **YW I+85**

Dam's record: 5 calves ratio 104. Dam is a Pathfinder cow.  
 Recommended for larger heifers.

# 56

## KRAYE 2V1 JK 8260

Calved 2/17/08 Tattoo: 8260  
**BW: 82**      **205 ADJ: 710**      **365 ADJ: 1193**      **ADG: 3.4**

|                                |                     |
|--------------------------------|---------------------|
| Bon View New Design 1407 ..... | B/R New Design 036  |
| <b>RITO 2V1 OF 2536 1407</b>   | Bon View Pride 664  |
| GAR Precision 2536 .....       | GAR Precision 1680  |
|                                | GAR Ext 2104        |
| Marcys Powerstroke .....       | Schurrtop Supreme   |
| <b>MISS BURGESS JK 0198</b>    | Marcys 91 Pride 2   |
| Miss Burgess JK 5119 .....     | GDAR Rito 596 LT    |
|                                | Miss Burgess JK 620 |

### EXPECTED PROGENY DIFFERENCE

**BW I+2.5**      **WW I+47**      **MILK I+22**      **YW I+85**

Dam's record: 7 calves ratio 99.

# 57

## KRAYE FORESIGHT JK 8182

Calved 2/11/08 Tattoo: 8182  
**BW: 84**      **205 ADJ: 710**      **365 ADJ: 1208**      **ADG: 3.5**

|                           |                             |
|---------------------------|-----------------------------|
| Papa Forte 1921 .....     | Papa Optima 9818            |
| <b>WOODHILL FORESIGHT</b> | Papa Envious Blackbird 8832 |
| Bon View Gammer 85 .....  | Bon View Bando 598          |
|                           | Bon View Gammer 233         |
| N Bar Emulation EXT ..... | Emulation N Bar 5522        |
| <b>MISS PEGGY JK 909</b>  | N Bar Primrose 2424         |
| Miss Peggy JK 7111 .....  | Dameron Robust              |
|                           | Miss Peggy JK 405           |

### EXPECTED PROGENY DIFFERENCE

**BW I+2.7**      **WW I+54**      **MILK I+23**      **YW I+96**

Dam's record: 8 calves ratio 102. Granddam & great granddam are Pathfinder cows.

# 58

## KRAYE FORESIGHT DK 8154

|                            |                             |                      |                 |
|----------------------------|-----------------------------|----------------------|-----------------|
| Calved 2/08/08             |                             | Tattoo: 8154         |                 |
| <b>BW: 87</b>              | <b>205 ADJ: 708</b>         | <b>365 ADJ: 1174</b> | <b>ADG: 3.3</b> |
| Papa Forte 1921 .....      | Papa Optima 9818            |                      |                 |
| <b>WOODHILL FORESIGHT</b>  | Papa Envious Blackbird 8832 |                      |                 |
| Bon View Gammer 85 .....   | Bon View Bando 598          |                      |                 |
| N Bar Emulation EXT .....  | Bon View Gammer 233         |                      |                 |
| <b>JD SANDY PRIDE 0100</b> | Emulation N Bar 5522        |                      |                 |
| JD Sandy Pride 8100 .....  | N Bar Primrose 2424         |                      |                 |
|                            | Hunts 1483 Scotch Cap 5114  |                      |                 |
|                            | JD Sandy Pride 5100         |                      |                 |

### EXPECTED PROGENY DIFFERENCE

|                 |                |                  |                |
|-----------------|----------------|------------------|----------------|
| <b>BW I+2.9</b> | <b>WW I+55</b> | <b>MILK I+24</b> | <b>YW I+97</b> |
|-----------------|----------------|------------------|----------------|

Dam's record: 7 calves ratio 104. Granddam & great granddam are Pathfinder cows.

# 59

## KRAYE ON TARGET JK 8220

|                              |                      |                      |                 |
|------------------------------|----------------------|----------------------|-----------------|
| Calved 2/13/08               |                      | Tattoo: 8220         |                 |
| <b>BW: 86</b>                | <b>205 ADJ: 705</b>  | <b>365 ADJ: 1113</b> | <b>ADG: 2.9</b> |
| SAF 598 Bando 5175 .....     | Bon View Bando 598   |                      |                 |
| <b>BOYD ON TARGET 1083</b>   | SAF Royal Lass 1002  |                      |                 |
| Boyd Forever Lady 7095 ..... | DHD Traveler 6807    |                      |                 |
| SAF Fame .....               | SVF Forever Lady 57D |                      |                 |
| <b>MISS JK 130</b>           | Minerts Fortune 2000 |                      |                 |
| Miss T JK 9261 .....         | SAF Royal Lass 1027  |                      |                 |
|                              | Dameron Precedent    |                      |                 |
|                              | Miss T J K 3133      |                      |                 |

### EXPECTED PROGENY DIFFERENCE

|                 |                |                  |                |
|-----------------|----------------|------------------|----------------|
| <b>BW I+2.8</b> | <b>WW I+50</b> | <b>MILK I+17</b> | <b>YW I+93</b> |
|-----------------|----------------|------------------|----------------|

Dam's record: 6 calves ratio 102.



# 60

## KRAYE IMAGE MAKER JK 836

|                             |                          |                      |                 |
|-----------------------------|--------------------------|----------------------|-----------------|
| Calved 2/01/08              |                          | Tattoo: 836          |                 |
| <b>BW: 83</b>               | <b>205 ADJ: 706</b>      | <b>365 ADJ: 1276</b> | <b>ADG: 3.9</b> |
| Hero 6267 of RR 2418 .....  | RR Hero 6267             |                      |                 |
| <b>HA IMAGE MAKER 0415</b>  | RR Everelda Entense 0413 |                      |                 |
| HA Rito Blackcap 9038 ..... | H 96 Rito 2100 7371      |                      |                 |
| SAV 8180 Traveler 004 ..... | H 96 Blackcap 3835       |                      |                 |
| <b>MISS BURGESS JK 635</b>  | Sitz Traveler 8180       |                      |                 |
| Miss Burgess JK 4221 .....  | Boyd Forever Lady 8003   |                      |                 |
|                             | B/R New Frontier 095     |                      |                 |
|                             | Miss Burgess JK 0198     |                      |                 |

### EXPECTED PROGENY DIFFERENCE

|                 |                |                  |                |
|-----------------|----------------|------------------|----------------|
| <b>BW I+2.6</b> | <b>WW I+56</b> | <b>MILK I+29</b> | <b>YW I+97</b> |
|-----------------|----------------|------------------|----------------|

Dam's record: 1 calf ratio 100.

# 61

## KRAYE MIDLAND JK 8371

|                             |                            |                      |                 |
|-----------------------------|----------------------------|----------------------|-----------------|
| Calved 3/01/08              |                            | Tattoo: 8371         |                 |
| <b>BW: 82</b>               | <b>205 ADJ: 703</b>        | <b>365 ADJ: 1121</b> | <b>ADG: 3.0</b> |
| BR Midland .....            | Twin Valley Precision E161 |                      |                 |
| <b>A&amp;B MIDLAND 4039</b> | BR Royal Lass 7036-19      |                      |                 |
| A&B Kassie Rose 9175 .....  | EXAR Krugerrand 7119       |                      |                 |
| SAF Focus of ER .....       | A&B Rose 7032              |                      |                 |
| <b>MISS QUEEN JK 124</b>    | SAF Fame                   |                      |                 |
| Miss Queen JK 9117 .....    | GDAR Forever Lady 246      |                      |                 |
|                             | HAR New Design H81         |                      |                 |
|                             | Miss Queen JK 504          |                      |                 |

### EXPECTED PROGENY DIFFERENCE

|                 |                |                  |                |
|-----------------|----------------|------------------|----------------|
| <b>BW I+0.9</b> | <b>WW I+49</b> | <b>MILK I+17</b> | <b>YW I+86</b> |
|-----------------|----------------|------------------|----------------|

Dam's record: 6 calves ratio 98. Recommended for heifers.

## 62

## KRAYE IN FOCUS JK 862

| Calved 2/03/08        |                              | Tattoo: 862             |                 |
|-----------------------|------------------------------|-------------------------|-----------------|
| <b>BW: 77</b>         | <b>205 ADJ: 702</b>          | <b>365 ADJ: 1208</b>    | <b>ADG: 3.5</b> |
| SAF Focus of ER ..... | SAF Fame                     | GDAR Forever Lady 246   |                 |
| <b>MYTTY IN FOCUS</b> | Mytty Countess 906 .....     | Sitz Alliance 6595      |                 |
|                       |                              | Baldrige Countess 357   |                 |
|                       | WAR Alliance 9126 6006 ..... | Sitz Alliance 6595      |                 |
| <b>BARBARA JK 657</b> | Barbara JK 4228 .....        | WAR Bando 6006 598 4053 |                 |
|                       |                              | B/R New Frontier 095    |                 |
|                       |                              | Barbara JK 004          |                 |

## EXPECTED PROGENY DIFFERENCE

| BW I+0.4 | WW I+54 | MILK I+26 | YW I+103 |
|----------|---------|-----------|----------|
|----------|---------|-----------|----------|

Dam's record: 1 calf ratio 100. Recommended for heifers.

Great granddam is a Pathfinder cow.

## 63

## KRAYE IN FOCUS JK 895

| Calved 2/05/08        |                          | Tattoo: 895           |                 |
|-----------------------|--------------------------|-----------------------|-----------------|
| <b>BW: 87</b>         | <b>205 ADJ: 706</b>      | <b>365 ADJ: 1237</b>  | <b>ADG: 3.7</b> |
| SAF Focus of ER ..... | SAF Fame                 | GDAR Forever Lady 246 |                 |
| <b>MYTTY IN FOCUS</b> | Mytty Countess 906 ..... | Sitz Alliance 6595    |                 |
|                       |                          | Baldrige Countess 357 |                 |
|                       | GAR Grid Maker .....     | GDAR Traveler 044     |                 |
| <b>ERICA JK 5102</b>  | Erica JK 128 .....       | GAR Precision 2536    |                 |
|                       |                          | Leachman Right Time   |                 |
|                       |                          | Erica FK 9235         |                 |

## EXPECTED PROGENY DIFFERENCE

| BW I+1.9 | WW I+55 | MILK I+20 | YW I+97 |
|----------|---------|-----------|---------|
|----------|---------|-----------|---------|

Dam's record: 2 calves ratio 103. Great granddam is a Pathfinder cow.

Recommended for larger heifers.

## 64

## KRAYE IN FOCUS JK 892

| Calved 2/05/08                  |                               | Tattoo: 892             |                 |
|---------------------------------|-------------------------------|-------------------------|-----------------|
| <b>BW: 87</b>                   | <b>205 ADJ: 708</b>           | <b>365 ADJ: 1180</b>    | <b>ADG: 3.3</b> |
| SAF Focus of ER .....           | SAF Fame                      | GDAR Forever Lady 246   |                 |
| <b>MYTTY IN FOCUS</b>           | Mytty Countess 906 .....      | Sitz Alliance 6595      |                 |
|                                 |                               | Baldrige Countess 357   |                 |
|                                 | Connealy VRD 869 .....        | Vermilion Dateline 7078 |                 |
| <b>MISS REVOLUTIONS JK 6166</b> | Miss Revolutions JK 021 ..... | Eura Cap of Conanga     |                 |
|                                 |                               | Stevenson Royce 741C    |                 |
|                                 |                               | Miss Revolutions JK 663 |                 |

## EXPECTED PROGENY DIFFERENCE

| BW I+2.0 | WW I+48 | MILK I+23 | YW I+92 |
|----------|---------|-----------|---------|
|----------|---------|-----------|---------|

Dam's record: 1 calf ratio 100. Recommended for larger heifers.

## 65

## KRAYE 1961 JK 896

| Calved 2/05/08           |                                 | Tattoo: 896                |                 |
|--------------------------|---------------------------------|----------------------------|-----------------|
| <b>BW: 83</b>            | <b>205 ADJ: 700</b>             | <b>365 ADJ: 1154</b>       | <b>ADG: 3.2</b> |
| SAF 598 Bando 5175 ..... | Bon View Bando 598              | SAF Royal Lass 1002        |                 |
| <b>HSAF BANDO 1961</b>   | JKS Miss Cheyenne 196 .....     | N Bar Emulation Ext        |                 |
|                          |                                 | Magic Meadow Miss Cheyenne |                 |
|                          | KCF Bennett Coalition SCC ..... | Sitz Alliance 6595         |                 |
| <b>BLACKBIRD JK 6280</b> | Blackbird JG 0235 .....         | Pleasant Pill of Conanga   |                 |
|                          |                                 | QLC B61 Merger A562H       |                 |
|                          |                                 | Blackbird JG 7194          |                 |

## EXPECTED PROGENY DIFFERENCE

| BW I+2.4 | WW I+47 | MILK I+28 | YW I+85 |
|----------|---------|-----------|---------|
|----------|---------|-----------|---------|

Dam's record: 1 calf ratio 99. Granddam is a Pathfinder cow.

Recommended for larger heifers.

## 66

## KRAYE DECADE JK 8366

| Calved 2/28/08          |                          | Tattoo: 8366            |                 |
|-------------------------|--------------------------|-------------------------|-----------------|
| <b>BW: 94</b>           | <b>205 ADJ: 695</b>      | <b>365 ADJ: 1106</b>    | <b>ADG: 2.9</b> |
| Lau Decade .....        | CA Future Direction 5321 | LVVF Alliance JC 111    |                 |
| <b>4 G DECADE 6111</b>  | 4 G Mist 243 .....       | Grandview Womack Direct |                 |
|                         |                          | 4 G Mist 972            |                 |
|                         | HAR New Design H81 ..... | B/R New Design 036      |                 |
| <b>MISS WIX JK 2190</b> | Miss Wix FK9294 .....    | HAR Bogie 111           |                 |
|                         |                          | QLC B61 Merger A562H    |                 |
|                         |                          | Miss Wix FK 6103        |                 |

## EXPECTED PROGENY DIFFERENCE

| BW I+3.8 | WW I+45 | MILK I+24 | YW I+79 |
|----------|---------|-----------|---------|
|----------|---------|-----------|---------|

Dam's record: 4 calves ratio 104. Granddam is a Pathfinder cow.

## 67

## KRAYE BUSHMAN JK 8312

| Calved 2/20/08             |                      | Tattoo: 8312            |                 |
|----------------------------|----------------------|-------------------------|-----------------|
| <b>BW: 84</b>              | <b>205 ADJ: 701</b>  | <b>365 ADJ: 1229</b>    | <b>ADG: 3.6</b> |
| ACF Bushman 1132 .....     | Rockn D Ambush 1531  | Davis Yr Blackbird 558H |                 |
| <b>DAIGGER BUSHMAN 518</b> | Sitz Alliance 6595   | JD Miss Para 7026       |                 |
| JD Miss Para 9826 .....    | B/R New Design 036   | White Fence Pride H1    |                 |
| B/R New Frontier 095 ..... | QLC Krugerrand Y118D | Miss Evelyn JK 057      |                 |
| <b>MISS EVELYN JK 397</b>  |                      |                         |                 |
| Miss Evelyn JK 6115 .....  |                      |                         |                 |

## EXPECTED PROGENY DIFFERENCE

|                 |                |                  |                |
|-----------------|----------------|------------------|----------------|
| <b>BW I+1.0</b> | <b>WW I+47</b> | <b>MILK I+17</b> | <b>YW I+83</b> |
|-----------------|----------------|------------------|----------------|

Recommended for heifers.

## 68

## KRAYE BUSHMAN JK 8305

| Calved 2/19/08             |                            | Tattoo: 8305            |                 |
|----------------------------|----------------------------|-------------------------|-----------------|
| <b>BW: 87</b>              | <b>205 ADJ: 696</b>        | <b>365 ADJ: 1114</b>    | <b>ADG: 3.0</b> |
| ACF Bushman 1132 .....     | Rockn D Ambush 1531        | Davis Yr Blackbird 558H |                 |
| <b>DAIGGER BUSHMAN 518</b> | Sitz Alliance 6595         | JD Miss Para 7026       |                 |
| JD Miss Para 9826 .....    | Krugerrand of Donamere 490 | A&B Queen 4173          |                 |
| A&B Yukon 7150 .....       | QLC Requisite              | Miss Candar FK 5106     |                 |
| <b>MISS CANDAR JK 465</b>  |                            |                         |                 |
| Miss Candar FK 714 .....   |                            |                         |                 |

## EXPECTED PROGENY DIFFERENCE

|                 |                |                  |                |
|-----------------|----------------|------------------|----------------|
| <b>BW I+1.7</b> | <b>WW I+54</b> | <b>MILK I+15</b> | <b>YW I+97</b> |
|-----------------|----------------|------------------|----------------|

Dam's record: 2 calves ratio 96. Great granddam is a Pathfinder cow.

Recommended for larger heifers.

## 69

## KRAYE IN FOCUS JK 8259

| Calved 2/16/08           |                         | Tattoo: 8259          |                 |
|--------------------------|-------------------------|-----------------------|-----------------|
| <b>BW: 78</b>            | <b>205 ADJ: 695</b>     | <b>365 ADJ: 1197</b>  | <b>ADG: 3.5</b> |
| SAF Focus of ER .....    | SAF Fame                | GDAR Forever Lady 246 |                 |
| <b>MYTTY IN FOCUS</b>    | Sitz Alliance 6595      | Baldrige Countess 357 |                 |
| Mytty Countess 906 ..... | Vermilion Dateline 7078 | Eura Cap of Conanga   |                 |
| Connealy VRD 869 .....   | QLC B65 Ext P340 E144H  | Miss Polka FK 778     |                 |
| <b>MISS POLK JK 6200</b> |                         |                       |                 |
| Miss Polk FK 9144 .....  |                         |                       |                 |

## EXPECTED PROGENY DIFFERENCE

|                 |                |                  |                |
|-----------------|----------------|------------------|----------------|
| <b>BW I+0.8</b> | <b>WW I+51</b> | <b>MILK I+22</b> | <b>YW I+95</b> |
|-----------------|----------------|------------------|----------------|

Dam's record: 1 calf ratio 99. Recommended for heifers.

## 70

## KRAYE RIGHT TIME JK 8229

| Calved 2/14/08                 |                           | Tattoo: 8229             |                 |
|--------------------------------|---------------------------|--------------------------|-----------------|
| <b>BW: 77</b>                  | <b>205 ADJ: 701</b>       | <b>365 ADJ: 1077</b>     | <b>ADG: 2.7</b> |
| Leachman Right Time .....      | N Bar Emulation EXT       | Leachman Erica 0025      |                 |
| <b>HYLINE RIGHT TIME 338</b>   | Hyline SVF Traveler 0115  | Hyline Pride 870         |                 |
| Hyline Pride 265 .....         | Jauer 353 Traveler 589 27 | Pleasant of Conanaga 736 |                 |
| Baldrige Kaboom K243 KCF ..... | HAR New Design H81        | Miss Burgess JK 9153     |                 |
| <b>MISS BURGESS JK 5200</b>    |                           |                          |                 |
| Miss Burgess JK 2177 .....     |                           |                          |                 |

## EXPECTED PROGENY DIFFERENCE

|                 |                |                  |                 |
|-----------------|----------------|------------------|-----------------|
| <b>BW I+1.8</b> | <b>WW I+56</b> | <b>MILK I+19</b> | <b>YW I+102</b> |
|-----------------|----------------|------------------|-----------------|

Dam's record: 2 calves ratio 100.

## 71

## KRAYE AMBUSH JK 8227

| Calved 2/14/08                 |                      | Tattoo: 8227                |                 |
|--------------------------------|----------------------|-----------------------------|-----------------|
| <b>BW: 86</b>                  | <b>205 ADJ: 696</b>  | <b>365 ADJ: 1182</b>        | <b>ADG: 3.4</b> |
| Rockn D Ambush 1531 .....      | Paramont Ambush 2172 | MS Blackcap Band of RD 1301 |                 |
| <b>B/R AMBUSH 28</b>           | N Bar Emulation EXT  | B/R Ruby of Tiffany 5113    |                 |
| B/R Ruby of Tiffany 8250 ..... | Leachman Right Time  | Hyline Pride 265            |                 |
| Hyline Right Time 338 .....    | QLC Mister T         | Miss Lassie JK 462          |                 |
| <b>MISS LASSIE JK 423</b>      |                      |                             |                 |
| Miss Lassie JK 6152 .....      |                      |                             |                 |

## EXPECTED PROGENY DIFFERENCE

|                 |                |                  |                |
|-----------------|----------------|------------------|----------------|
| <b>BW I+2.5</b> | <b>WW I+52</b> | <b>MILK I+16</b> | <b>YW I+89</b> |
|-----------------|----------------|------------------|----------------|

Dam's record: 3 calves ratio 103.

72

**KRAYE FOUNDATION JK 814**

| Calved 1/28/08                 |                     | Tattoo: 814              |                 |
|--------------------------------|---------------------|--------------------------|-----------------|
| <b>BW: 82</b>                  | <b>205 ADJ: 695</b> | <b>365 ADJ: 1233</b>     | <b>ADG: 3.7</b> |
| CA Future Direction 5321 ..... |                     | GAR Precision 1680       |                 |
| <b>CONNELY FOUNDATION 426</b>  |                     | CA Miss Power Fix 308    |                 |
| Ruby Red of Conanga 436 .....  |                     | Bon View New Design 878  |                 |
| B/R Ambush 28 .....            |                     | Ruby of Conanga 430      |                 |
| <b>MISS ERICA JK 6132</b>      |                     | Rockn D Ambush 1531      |                 |
| Miss Erica JK 367 .....        |                     | B/R Ruby of Tiffany 8250 |                 |
|                                |                     | Leachman Right Time      |                 |
|                                |                     | Miss Erica FK 6127       |                 |

**EXPECTED PROGENY DIFFERENCE**

|                 |                |                  |                |
|-----------------|----------------|------------------|----------------|
| <b>BW I+2.8</b> | <b>WW I+52</b> | <b>MILK I+20</b> | <b>YW I+95</b> |
|-----------------|----------------|------------------|----------------|

Dam's record: 1 calf ratio 99.

73

**KRAYE IMAGE MAKER MK 8106**

| Calved 2/06/08                 |                     | Tattoo: 8106             |                 |
|--------------------------------|---------------------|--------------------------|-----------------|
| <b>BW: 81</b>                  | <b>205 ADJ: 698</b> | <b>365 ADJ: 1063</b>     | <b>ADG: 2.6</b> |
| Hero 6267 of RR 2418 .....     |                     | RR Hero 6267             |                 |
| <b>HA IMAGE MAKER 0415</b>     |                     | RR Everelda Entense 0413 |                 |
| HA Rito Blackcap 9038 .....    |                     | H 96 Rito 2100 7371      |                 |
| Bon View New Design 1407 ..... |                     | H 96 Blackcap 3835       |                 |
| <b>MISS PRIDE MK 580</b>       |                     | B/R New Design 036       |                 |
| Miss Pride MK 245 .....        |                     | Bon View Pride 664       |                 |
|                                |                     | SAF Focus of ER          |                 |
|                                |                     | Miss Pride MK 0174       |                 |

**EXPECTED PROGENY DIFFERENCE**

|                 |                |                  |                |
|-----------------|----------------|------------------|----------------|
| <b>BW I+0.8</b> | <b>WW I+51</b> | <b>MILK I+31</b> | <b>YW I+91</b> |
|-----------------|----------------|------------------|----------------|

Dam's record: 2 calves ratio 101. Recommended for heifers.

74

**KRAYE NET WORTH JK 8213**

| Calved 2/13/08              |                     | Tattoo: 8213           |                 |
|-----------------------------|---------------------|------------------------|-----------------|
| <b>BW: 84</b>               | <b>205 ADJ: 693</b> | <b>365 ADJ: 973</b>    | <b>ADG: 2.2</b> |
| SAV 8180 Traveler 004 ..... |                     | Sitz Traveler 8180     |                 |
| <b>SAV NET WORTH 4200</b>   |                     | Boyd Forever Lady 8003 |                 |
| SAV May 2410 .....          |                     | SAF 598 Bando 5175     |                 |
| B/R New Frontier 095 .....  |                     | SAV May 6269           |                 |
| <b>MISS BURGESS JK 4221</b> |                     | B/R New Design 036     |                 |
| Miss Burgess JK 0198 .....  |                     | White Fence Pride H1   |                 |
|                             |                     | Marcys Powestroke      |                 |
|                             |                     | Miss Burgess JK 5119   |                 |

**EXPECTED PROGENY DIFFERENCE**

|                 |                |                  |                |
|-----------------|----------------|------------------|----------------|
| <b>BW I+3.0</b> | <b>WW I+47</b> | <b>MILK I+25</b> | <b>YW I+91</b> |
|-----------------|----------------|------------------|----------------|

Dam's record: 3 calves ratio 105.

75

**KRAYE NET WORTH JK 8209**

| Calved 2/13/08              |                     | Tattoo: 8209            |                 |
|-----------------------------|---------------------|-------------------------|-----------------|
| <b>BW: 96</b>               | <b>205 ADJ: 689</b> | <b>365 ADJ: 1238</b>    | <b>ADG: 3.8</b> |
| SAV 8180 Traveler 004 ..... |                     | Sitz Traveler 8180      |                 |
| <b>SAV NET WORTH 4200</b>   |                     | Boyd Forever Lady 8003  |                 |
| SAV May 2410 .....          |                     | SAF 598 Bando 5175      |                 |
| Connealy VRD 869 .....      |                     | SAV May 6269            |                 |
| <b>MISS BURGESS JK 567</b>  |                     | Vermilion Dateline 7078 |                 |
| Miss Burgess JK 0198 .....  |                     | Eura Cap of Conanga     |                 |
|                             |                     | Marcys Powerstroke      |                 |
|                             |                     | Miss Burgess JK 5119    |                 |

**EXPECTED PROGENY DIFFERENCE**

|                 |                |                  |                |
|-----------------|----------------|------------------|----------------|
| <b>BW I+5.2</b> | <b>WW I+50</b> | <b>MILK I+23</b> | <b>YW I+98</b> |
|-----------------|----------------|------------------|----------------|

Dam's record: 2 calves ratio 94.

76

**KRAYE 2V1 JK 8164**

| Calved 2/10/08                 |                     | Tattoo: 8164          |                 |
|--------------------------------|---------------------|-----------------------|-----------------|
| <b>BW: 90</b>                  | <b>205 ADJ: 692</b> | <b>365 ADJ: 1066</b>  | <b>ADG: 2.7</b> |
| Bon View New Design 1407 ..... |                     | B/R New Design 036    |                 |
| <b>RITO 2V1 OF 2536 1407</b>   |                     | Bon View Pride 664    |                 |
| GAR Precision 2536 .....       |                     | GAR Precision 1680    |                 |
| Connealy Leadtime .....        |                     | GAR Ext 2104          |                 |
| <b>MISS T JK 257</b>           |                     | Connealy Dateline     |                 |
| Miss T JK 662 .....            |                     | Ruths Rona of Conanga |                 |
|                                |                     | QLC Mister T          |                 |
|                                |                     | Miss T J K 720        |                 |

**EXPECTED PROGENY DIFFERENCE**

|                 |                |                  |                |
|-----------------|----------------|------------------|----------------|
| <b>BW I+2.8</b> | <b>WW I+49</b> | <b>MILK I+22</b> | <b>YW I+90</b> |
|-----------------|----------------|------------------|----------------|

Dam's record: 5 calves ratio 100.

## 77

**KRAYE IMAGE MAKER MK 8159**

| Calved 2/09/08              |                     | Tattoo: 8106             |                 |
|-----------------------------|---------------------|--------------------------|-----------------|
| <b>BW: 85</b>               | <b>205 ADJ: 693</b> | <b>365 ADJ: 1120</b>     | <b>ADG: 3.0</b> |
| Hero 6267 of RR 2418 .....  |                     | RR Hero 6267             |                 |
| <b>HA IMAGE MAKER 0415</b>  |                     | RR Everelda Entense 0413 |                 |
| HA Rito Blackcap 9038 ..... |                     | H 96 Rito 2100 7371      |                 |
|                             |                     | H 96 Blackcap 3835       |                 |
| Connealy Danny Boy .....    |                     | Connealy Timeline        |                 |
| <b>MISS QUEEN MK 530</b>    |                     | Energy of Conanga 4851   |                 |
| Miss Queen MK 3202 .....    |                     | HAR New Design H81       |                 |
|                             |                     | Miss Queen MK 9193       |                 |

**EXPECTED PROGENY DIFFERENCE**

| BW I+1.4 | WW I+55 | MILK I+25 | YW I+94 |
|----------|---------|-----------|---------|
|----------|---------|-----------|---------|

Dam's record: 2 calves ratio 96. Recommended for heifers.

## 78

**KRAYE RITO 416 MK 879**

| Calved 2/04/08                  |                     | Tattoo: 879           |                 |
|---------------------------------|---------------------|-----------------------|-----------------|
| <b>BW: 86</b>                   | <b>205 ADJ: 694</b> | <b>365 ADJ: 1184</b>  | <b>ADG: 3.4</b> |
| Rito 112 of 2536 Rito 616 ..... |                     | Rito 616 of 4B20 6807 |                 |
| <b>TC RITO 416</b>              |                     | GAR Precision 2536    |                 |
| TC Chloe 2056 .....             |                     | Connealy Forefront    |                 |
|                                 |                     | TC Chloe 6010         |                 |
| SAF Focus of ER .....           |                     | SAF Fame              |                 |
| <b>MISS PRIDE MK 245</b>        |                     | GDAR Forever Lady 246 |                 |
| Miss Pride MK 0174 .....        |                     | QLC B61 Merger A562H  |                 |
|                                 |                     | Miss Pride MK 798     |                 |

**EXPECTED PROGENY DIFFERENCE**

| BW I+1.4 | WW I+47 | MILK I+23 | YW I+86 |
|----------|---------|-----------|---------|
|----------|---------|-----------|---------|

Dam's record: 4 calves ratio 99. Recommended for larger heifers.

## 79

**KRAYE FORESIGHT JK 8156**

| Calved 2/08/08                 |                     | Tattoo: 879                 |                 |
|--------------------------------|---------------------|-----------------------------|-----------------|
| <b>BW: 84</b>                  | <b>205 ADJ: 693</b> | <b>365 ADJ: 1176</b>        | <b>ADG: 3.4</b> |
| Papa Forte 1921 .....          |                     | Papa Optima 9818            |                 |
| <b>WOODHILL FORESIGHT</b>      |                     | Papa Envious Blackbird 8832 |                 |
| Bon View Gammer 85 .....       |                     | Bon View Bando 598          |                 |
|                                |                     | Bon View Gammer 233         |                 |
| Vermilion Dateline 7078 .....  |                     | Connealy Dateline           |                 |
| <b>EILEENMERE BELLE JK 372</b> |                     | Vermilion Blackbird 5044    |                 |
| Eileenmere Belle FK 7109 ..... |                     | QLC Krugerrand Y118D        |                 |
|                                |                     | Eileenmere Belle FK 7177    |                 |

**EXPECTED PROGENY DIFFERENCE**

| BW I+3.1 | WW I+51 | MILK I+22 | YW I+92 |
|----------|---------|-----------|---------|
|----------|---------|-----------|---------|

Dam's record: 4 calves ratio 99. Great granddam is a Pathfinder cow.

## 80

**KRAYE YUKON JK 850**

| Calved 2/02/08             |                     | Tattoo: 8156               |                 |
|----------------------------|---------------------|----------------------------|-----------------|
| <b>BW: 83</b>              | <b>205 ADJ: 691</b> | <b>365 ADJ: 1200</b>       | <b>ADG: 3.5</b> |
| A&B Yukon 7150 .....       |                     | Krugerrand of Donamere 490 |                 |
| <b>A&amp;B YUKON 2115</b>  |                     | A&B Queen 4173             |                 |
| A&b Annie 4008 .....       |                     | N Bar Emulation Ext        |                 |
|                            |                     | A&b Rito Annie 2031        |                 |
| RR Scotchcap 9440 .....    |                     | Scotch Cap                 |                 |
| <b>MISS BARBARA FK 921</b> |                     | Blackcap of RR 5367        |                 |
| Miss Barbara FK 271 .....  |                     | Leachman Prompter          |                 |
|                            |                     | Barbara FK 789             |                 |

**EXPECTED PROGENY DIFFERENCE**

| BW I+2.7 | WW I+50 | MILK I+16 | YW I+93 |
|----------|---------|-----------|---------|
|----------|---------|-----------|---------|

Dam's record: 7 calves ratio 103. Dam is a Pathfinder cow.

## 81

**KRAYE IN FOCUS HK 840**

| Calved 2/01/08             |                     | Tattoo: 840            |                 |
|----------------------------|---------------------|------------------------|-----------------|
| <b>BW: 76</b>              | <b>205 ADJ: 694</b> | <b>365 ADJ: 1216</b>   | <b>ADG: 3.6</b> |
| SAF Focus of ER .....      |                     | SAF Fame               |                 |
| <b>MYTTY IN FOCUS</b>      |                     | GDAR Forever Lady 246  |                 |
| Mytty Countess 906 .....   |                     | Sitz Alliance 6595     |                 |
|                            |                     | Baldridge Countess 357 |                 |
| B/R New Frontier 095 ..... |                     | B/R New Design 036     |                 |
| <b>MISS SARA HK 6158</b>   |                     | White Fence Pride H1   |                 |
| Miss Sara HK 243 .....     |                     | Connealy Forefront     |                 |
|                            |                     | Miss Sara HK 048       |                 |

**EXPECTED PROGENY DIFFERENCE**

| BW I+0.8 | WW I+51 | MILK I+20 | YW I+94 |
|----------|---------|-----------|---------|
|----------|---------|-----------|---------|

Dam's record: 1 calf ratio 98. Recommended for heifers.

## 82

## KRAYE 2V1 JK 8393

| Calved 3/08/08              |                             | Tattoo: 8393               |                 |
|-----------------------------|-----------------------------|----------------------------|-----------------|
| <b>BW: 82</b>               | <b>205 ADJ: 694</b>         | <b>365 ADJ: 1152</b>       | <b>ADG: 3.2</b> |
| Rito 2V1 of 2536 1407 ..... | Bon View New Design 1407    | GAR Precision 2536         |                 |
| <b>RTP STAR OF 2V1 5072</b> | RTP New Playmate 072 .....  | EAF New Trend 36 107       |                 |
|                             |                             | RTP Playmate 72            |                 |
|                             |                             | Leachman Right Time        |                 |
| <b>SANDY PRIDE JK 569</b>   | Hyline Right Time 338 ..... | Hyline Pride 265           |                 |
|                             | JD Sandy Pride 8834 .....   | Hunts 1483 Scotch Cap 5114 |                 |
|                             |                             | JD Sandy Pride 3834        |                 |
| EXPECTED PROGENY DIFFERENCE |                             |                            |                 |
| <b>BW I+1.9</b>             | <b>WW I+51</b>              | <b>MILK I+20</b>           | <b>YW I+86</b>  |

## 83

## KRAYE NET WORTH JK 8217

| Calved 2/13/08              |                               | Tattoo: 8217             |                 |
|-----------------------------|-------------------------------|--------------------------|-----------------|
| <b>BW: 102</b>              | <b>205 ADJ: 682</b>           | <b>365 ADJ: 1039</b>     | <b>ADG: 2.6</b> |
| SAV 8180 Traveler 004 ..... | Sitz Traveler 8180            | Boyd Forever Lady 8003   |                 |
| <b>SAV NET WORTH 4200</b>   | SAV May 2410 .....            | SAF 598 Bando 5175       |                 |
|                             |                               | SAV May 6269             |                 |
|                             |                               | Connealy Dateline        |                 |
| <b>MATILDA OF JK 4128</b>   | Vermilion Dateline 7078 ..... | Vermilion Blackbird 5044 |                 |
|                             | Matilda of JK 915 .....       | N Bar Emulation EXT      |                 |
|                             |                               | Matilda of JK 7186       |                 |
| EXPECTED PROGENY DIFFERENCE |                               |                          |                 |
| <b>BW I+6.5</b>             | <b>WW I+55</b>                | <b>MILK I+24</b>         | <b>YW I+100</b> |

Dam's record: 3 calves ratio 105.

## 84

## KRAYE YUKON JK 8131

| Calved 2/07/08              |                               | Tattoo: 8131         |                 |
|-----------------------------|-------------------------------|----------------------|-----------------|
| <b>BW: 100</b>              | <b>205 ADJ: 682</b>           | <b>365 ADJ: 1159</b> | <b>ADG: 3.3</b> |
| A&B Yukon 7150 .....        | Kruggerand of Donamere 490    | A&B Queen 4173       |                 |
| <b>A&amp;B YUKON 2115</b>   | A&b Annie 4008 .....          | N Bar Emulation Ext  |                 |
|                             |                               | A&b Rito Annie 2031  |                 |
|                             |                               | B/R New Design 036   |                 |
| <b>PRIDE OF JK 2184</b>     | Bon View New Design 878 ..... | Bon View Gammer 85   |                 |
|                             | Pride of FK 309 .....         | Leachman Prompter    |                 |
|                             |                               | Pride of FK 782      |                 |
| EXPECTED PROGENY DIFFERENCE |                               |                      |                 |
| <b>BW I+5.0</b>             | <b>WW I+51</b>                | <b>MILK I+15</b>     | <b>YW I+94</b>  |

Dam's record: 5 calves ratio 98. Dam and granddam are Pathfinder cows.

## 85

## KRAYE RIGHT TIME JK 8124

| Calved 2/07/08               |                              | Tattoo: 8124             |                 |
|------------------------------|------------------------------|--------------------------|-----------------|
| <b>BW: 85</b>                | <b>205 ADJ: 684</b>          | <b>365 ADJ: 1097</b>     | <b>ADG: 2.9</b> |
| Leachman Right Time .....    | N Bar Emulation EXT          | Leachman Erica 0025      |                 |
| <b>HYLINE RIGHT TIME 338</b> | Hyline SVF Traveler 0115     | Hyline Pride 870         |                 |
|                              | Rockn D Ambush 1531          | B/R Ruby of Tiffany 8250 |                 |
| <b>MISS BLACKBIRD JK 513</b> | Miss Blackbird JK 3100 ..... | White Oak Precise 6002   |                 |
|                              |                              | Miss Blackbird JK 1123   |                 |
| EXPECTED PROGENY DIFFERENCE  |                              |                          |                 |
| <b>BW I+3.1</b>              | <b>WW I+50</b>               | <b>MILK I+22</b>         | <b>YW I+94</b>  |

Dam's record: 2 calves ratio 99.

## 86

## KRAYE 2V1 JK 8153

| Calved 2/08/08                 |                              | Tattoo: 8153         |                 |
|--------------------------------|------------------------------|----------------------|-----------------|
| <b>BW: 84</b>                  | <b>205 ADJ: 683</b>          | <b>365 ADJ: 1109</b> | <b>ADG: 3.0</b> |
| Bon View New Design 1407 ..... | B/R New Design 036           | Bon View Pride 664   |                 |
| <b>RITO 2V1 OF 2536 1407</b>   | GAR Precision 2536 .....     | GAR Precision 1680   |                 |
|                                |                              | GAR Ext 2104         |                 |
|                                |                              | GAR Precision 1680   |                 |
| <b>ERICA JK 3137</b>           | White Oak Precise 6002 ..... | Stone Gate Jessie    |                 |
|                                | Erica JK 1117 .....          | Stevenson Royce 741C |                 |
|                                |                              | Erica JK 143         |                 |
| EXPECTED PROGENY DIFFERENCE    |                              |                      |                 |
| <b>BW I+2.2</b>                | <b>WW I+43</b>               | <b>MILK I+23</b>     | <b>YW I+83</b>  |

Dam's record: 4 calves ratio 101.

87

**KRAYE RIGHT TIME MK 8168**

| Calved 2/10/08               |                     | Tattoo: 8168              |                 |
|------------------------------|---------------------|---------------------------|-----------------|
| <b>BW: 87</b>                | <b>205 ADJ: 674</b> | <b>365 ADJ: 1135</b>      | <b>ADG: 3.2</b> |
| Leachman Right Time .....    |                     | N Bar Emulation EXT       |                 |
| <b>HYLINE RIGHT TIME 338</b> |                     | Leachman Erica 002 5      |                 |
| Hyline Pride 265 .....       |                     | Hyline SVF Traveler 0115  |                 |
|                              |                     | Hyline Pride 870          |                 |
| B/R Ambush 28 .....          |                     | Rockn D Ambush 1531       |                 |
| <b>MISS SARA MK 514</b>      |                     | B/R Ruby of Tiffany 82 50 |                 |
| Miss Sara MK 32 61 .....     |                     | QLC Exacto G337M          |                 |
|                              |                     | Miss Sara MK 0184         |                 |

**EXPECTED PROGENY DIFFERENCE**

|                 |                |                  |                |
|-----------------|----------------|------------------|----------------|
| <b>BW I+3.5</b> | <b>WW I+54</b> | <b>MILK I+22</b> | <b>YW I+97</b> |
|-----------------|----------------|------------------|----------------|

Dam's record: 2 calves ratio 102.

88

**KRAYE RIGHT TIME JK 8190**

| Calved 2/11/08               |                     | Tattoo: 8190              |                 |
|------------------------------|---------------------|---------------------------|-----------------|
| <b>BW: 84</b>                | <b>205 ADJ: 679</b> | <b>365 ADJ: 1164</b>      | <b>ADG: 3.4</b> |
| Leachman Right Time .....    |                     | N Bar Emulation EXT       |                 |
| <b>HYLINE RIGHT TIME 338</b> |                     | Leachman Erica 002 5      |                 |
| Hyline Pride 265 .....       |                     | Hyline SVF Traveler 0115  |                 |
|                              |                     | Hyline Pride 870          |                 |
| B/R Ambush 28 .....          |                     | Rockn D Ambush 1531       |                 |
| <b>PIPETTE JK 503</b>        |                     | B/R Ruby of Tiffany 82 50 |                 |
| Pipette JK 32 33 .....       |                     | B/R New Frontier 095      |                 |
|                              |                     | Pipette FK 332            |                 |

**EXPECTED PROGENY DIFFERENCE**

|                 |                |                  |                |
|-----------------|----------------|------------------|----------------|
| <b>BW I+2.4</b> | <b>WW I+53</b> | <b>MILK I+20</b> | <b>YW I+94</b> |
|-----------------|----------------|------------------|----------------|

89

**KRAYE NET WORTH JK 8277**

| Calved 2/18/08              |                     | Tattoo: 8277            |                 |
|-----------------------------|---------------------|-------------------------|-----------------|
| <b>BW: 100</b>              | <b>205 ADJ: 682</b> | <b>365 ADJ: 1184</b>    | <b>ADG: 3.5</b> |
| SAV 8180 Traveler 004 ..... |                     | Sitz Traveler 8180      |                 |
| <b>SAV NET WORTH 4200</b>   |                     | Boyd Forever Lady 8003  |                 |
| SAV May 2410 .....          |                     | SAF 598 Bando 5175      |                 |
|                             |                     | SAV May 62 69           |                 |
| Dameron VRD 2 37 .....      |                     | Vermilion Dateline 7078 |                 |
| <b>MISS MATILDA JK 5306</b> |                     | Sedgwicks Wendy 3859    |                 |
| Miss Matilda JK 201 .....   |                     | SAF Focus of ER         |                 |
|                             |                     | Miss Matilda JK 0130    |                 |

**EXPECTED PROGENY DIFFERENCE**

|                 |                |                  |                |
|-----------------|----------------|------------------|----------------|
| <b>BW I+5.3</b> | <b>WW I+49</b> | <b>MILK I+26</b> | <b>YW I+98</b> |
|-----------------|----------------|------------------|----------------|

Dam's record: 2 calves ratio 105.

90

**KRAYE RIGHT TIME JK 8278**

| Calved 2/18/08               |                     | Tattoo: 8278              |                 |
|------------------------------|---------------------|---------------------------|-----------------|
| <b>BW: 93</b>                | <b>205 ADJ: 693</b> | <b>365 ADJ: 1152</b>      | <b>ADG: 3.2</b> |
| Leachman Right Time .....    |                     | N Bar Emulation EXT       |                 |
| <b>HYLINE RIGHT TIME 338</b> |                     | Leachman Erica 002 5      |                 |
| Hyline Pride 265 .....       |                     | Hyline SVF Traveler 0115  |                 |
|                              |                     | Hyline Pride 870          |                 |
| B/R Ambush 28 .....          |                     | Rockn D Ambush 1531       |                 |
| <b>MISS MATILDA JK 405</b>   |                     | B/R Ruby of Tiffany 82 50 |                 |
| Miss Matilda JK 201 .....    |                     | SAF Focus of ER           |                 |
|                              |                     | Miss Matilda JK 0130      |                 |

**EXPECTED PROGENY DIFFERENCE**

|                 |                |                  |                |
|-----------------|----------------|------------------|----------------|
| <b>BW I+3.0</b> | <b>WW I+54</b> | <b>MILK I+21</b> | <b>YW I+97</b> |
|-----------------|----------------|------------------|----------------|

Dam's record: 3 calves ratio 97.

91

**KRAYE DECADE FK 8296**

| Calved 2/19/08                     |                     | Tattoo: 8296              |                 |
|------------------------------------|---------------------|---------------------------|-----------------|
| <b>BW: 89</b>                      | <b>205 ADJ: 687</b> | <b>365 ADJ: 1141</b>      | <b>ADG: 3.2</b> |
| Lau Decade .....                   |                     | CA Future Direction 532 1 |                 |
| <b>4 G DECADE 6111</b>             |                     | LVVF Alliance JC 111      |                 |
| 4 G Mist 243 .....                 |                     | Grandview Womack Direct   |                 |
|                                    |                     | 4 G Mist 972              |                 |
| VDAR Bando 97 .....                |                     | Tehama Bando 155          |                 |
| <b>IMPERIAL QUEEN LADY FK 3167</b> |                     | VDAR Beauty 12            |                 |
| Imperial Queen Lady PD 802 .....   |                     | GV Power Drive 7369       |                 |
|                                    |                     | Imperial Queen Lady B2 35 |                 |

**EXPECTED PROGENY DIFFERENCE**

|                 |                |                  |                |
|-----------------|----------------|------------------|----------------|
| <b>BW I+2.2</b> | <b>WW I+46</b> | <b>MILK I+21</b> | <b>YW I+78</b> |
|-----------------|----------------|------------------|----------------|

Dam's record: 4 calves ratio 104. Dam is a Pathfinder cow.

L  
O  
T

92



92

**KRAYE NET WORTH JK 8344**

|                             |                     |                            |                 |
|-----------------------------|---------------------|----------------------------|-----------------|
|                             | Calved 2/23/08      | Tattoo: 8344               |                 |
| <b>BW: 105</b>              | <b>205 ADJ: 686</b> | <b>365 ADJ: 12 33</b>      | <b>ADG: 3.8</b> |
| SAV 8180 Traveler 004 ..... |                     | Sitz Traveler 8180         |                 |
| <b>SAV NET WORTH 4200</b>   |                     | Boyd Forever Lady 8003     |                 |
| SAV May 2410 .....          |                     | SAF 598 Bando 5175         |                 |
|                             |                     | SAV May 6269               |                 |
| Dameron VRD 237 .....       |                     | Vermilion Dateline 7078    |                 |
| <b>ERICA JK 4295</b>        |                     | Sedgwicks Wendy 3859       |                 |
| Erica JK 1156 .....         |                     | Stapladder Focal Point 906 |                 |
|                             |                     | Erica FK 9147              |                 |

**EXPECTED PROGENY DIFFERENCE**

|                 |                |                  |                 |
|-----------------|----------------|------------------|-----------------|
| <b>BW I+6.5</b> | <b>WW I+54</b> | <b>MILK I+26</b> | <b>YW I+105</b> |
|-----------------|----------------|------------------|-----------------|

Dam's record: 3 calves ratio 104. Granddam is a Pathfinder cow.

93

**KRAYE YUKON JK 8306**

|                             |                     |                            |                 |
|-----------------------------|---------------------|----------------------------|-----------------|
|                             | Calved 2/19/08      | Tattoo: 8306               |                 |
| <b>BW: 92</b>               | <b>205 ADJ: 687</b> | <b>365 ADJ: 12 10</b>      | <b>ADG: 3.6</b> |
| A&B Yukon 7150 .....        |                     | Krugerrand of Donamere 490 |                 |
| <b>A&amp;B YUKON 2115</b>   |                     | A&B Queen 4173             |                 |
| A&B Annie 4008 .....        |                     | N Bar Emulation Ext        |                 |
|                             |                     | A&B Rito Annie 2031        |                 |
| TM Online 8N96 .....        |                     | WK Online                  |                 |
| <b>RANDYS Q MOTHER 1N42</b> |                     | Tys CC Empress 5539        |                 |
| Randys Q Mother 11 .....    |                     | Nelson Frontier            |                 |
|                             |                     | Randys Q Mother 7          |                 |

**EXPECTED PROGENY DIFFERENCE**

|                 |                |                  |                |
|-----------------|----------------|------------------|----------------|
| <b>BW I+3.2</b> | <b>WW I+49</b> | <b>MILK I+13</b> | <b>YW I+93</b> |
|-----------------|----------------|------------------|----------------|

Dam's record: 6 calves ratio 97.

94

**KRAYE ON TARGET MK 883**

|                              |                     |                      |                 |
|------------------------------|---------------------|----------------------|-----------------|
|                              | Calved 2/04/08      | Tattoo: 883          |                 |
| <b>BW: 90</b>                | <b>205 ADJ: 685</b> | <b>365 ADJ: 1194</b> | <b>ADG: 3.5</b> |
| SAF 598 Bando 5175 .....     |                     | Bon View Bando 598   |                 |
| <b>BOYD ON TARGET 1083</b>   |                     | SAF Royal Lass 1002  |                 |
| Boyd Forever Lady 7095 ..... |                     | DHD Traveler 6807    |                 |
|                              |                     | SVF Forever Lady 57D |                 |
| HAR New Design H81 .....     |                     | B/R New Design 036   |                 |
| <b>MISS QUEEN MK 247</b>     |                     | HAR Bogie 111        |                 |
| Miss Queen MK 902 .....      |                     | Sitz Alliance 6595   |                 |
|                              |                     | Miss Queen MK 716    |                 |

**EXPECTED PROGENY DIFFERENCE**

|                 |                |                  |                |
|-----------------|----------------|------------------|----------------|
| <b>BW I+2.9</b> | <b>WW I+43</b> | <b>MILK I+22</b> | <b>YW I+86</b> |
|-----------------|----------------|------------------|----------------|

Dam's record: 5 calves ratio 102.

95

**KRAYE RITO 416 JK 8317**

|                                 |                     |                       |                 |
|---------------------------------|---------------------|-----------------------|-----------------|
|                                 | Calved 2/21/08      | Tattoo: 8317          |                 |
| <b>BW: 90</b>                   | <b>205 ADJ: 677</b> | <b>365 ADJ: 1154</b>  | <b>ADG: 3.3</b> |
| Rito 112 of 2536 Rito 616 ..... |                     | Rito 616 of 4B20 6807 |                 |
| <b>TC RITO 416</b>              |                     | GAR Precision 2536    |                 |
| TC Chloe 2056 .....             |                     | Connealy Forefront    |                 |
|                                 |                     | TC Chloe 6010         |                 |
| VDAR Bando 97 .....             |                     | Tehama Bando 155      |                 |
| <b>Q LADY JK 382</b>            |                     | VDAR Beauty 12        |                 |
| Q Lady 1N92 of TM .....         |                     | TM Online 8X6         |                 |
|                                 |                     | Q Lady 4 of T M       |                 |

**EXPECTED PROGENY DIFFERENCE**

|                 |                |                  |                |
|-----------------|----------------|------------------|----------------|
| <b>BW I+2.5</b> | <b>WW I+47</b> | <b>MILK I+24</b> | <b>YW I+82</b> |
|-----------------|----------------|------------------|----------------|

Dam's record: 4 calves ratio 104. Dam and granddam are Pathfinder cows.

## 96

**KRAYE IMAGE MAKER MK 8316**

| Calved 2/21/08              |                          | Tattoo: 8316         |                 |
|-----------------------------|--------------------------|----------------------|-----------------|
| <b>BW: 80</b>               | <b>205 ADJ: 679</b>      | <b>365 ADJ: 1165</b> | <b>ADG: 3.4</b> |
| Hero 6267 of RR 2418 .....  | RR Hero 6267             |                      |                 |
| <b>HA IMAGE MAKER 0415</b>  | RR Everelda Entense 0413 |                      |                 |
| HA Rito Blackcap 9038 ..... | H 96 Rito 2100 7371      |                      |                 |
|                             | H 96 Blackcap 3835       |                      |                 |
| SAV 8180 Traveler 004 ..... | Sitz Traveler 8180       |                      |                 |
| <b>MISS QUEEN MK 642</b>    | Boyd Forever Lady 8003   |                      |                 |
| Miss Queen MK 4171 .....    | Connealy VRD 869         |                      |                 |
|                             | Miss Queen MK 8116       |                      |                 |

**EXPECTED PROGENY DIFFERENCE**

| BW I+2.0 | WW I+56 | MILK I+28 | YW I+102 |
|----------|---------|-----------|----------|
|----------|---------|-----------|----------|

Dam's record: 1 calf ratio 96. Great granddam is a Pathfinder cow.

Recommended for larger heifers.

## 97

**KRAYE IMAGE MAKER JK 821**

| Calved 1/30/08              |                          | Tattoo: 821          |                 |
|-----------------------------|--------------------------|----------------------|-----------------|
| <b>BW: 80</b>               | <b>205 ADJ: 680</b>      | <b>365 ADJ: 1147</b> | <b>ADG: 3.0</b> |
| Hero 6267 of RR 2418 .....  | RR Hero 6267             |                      |                 |
| <b>HA IMAGE MAKER 0415</b>  | RR Everelda Entense 0413 |                      |                 |
| HA Rito Blackcap 9038 ..... | H 96 Rito 2100 7371      |                      |                 |
|                             | H 96 Blackcap 3835       |                      |                 |
| SAV 8180 Traveler 004 ..... | Sitz Traveler 8180       |                      |                 |
| <b>MISS QUEEN JK 694</b>    | Boyd Forever Lady 8003   |                      |                 |
| Miss Queen JK 4187 .....    | B/R New Frontier 095     |                      |                 |
|                             | Miss Queen JG 6406       |                      |                 |

**EXPECTED PROGENY DIFFERENCE**

| BW I+2.0 | WW I+55 | MILK I+27 | YW I+96 |
|----------|---------|-----------|---------|
|----------|---------|-----------|---------|

Dam's record: 1 calf ratio 96. Recommended for larger heifers.

## 98

**KRAYE AMBUSH MK 8172**

| Calved 2/10/08                 |                             | Tattoo: 8172         |                 |
|--------------------------------|-----------------------------|----------------------|-----------------|
| <b>BW: 86</b>                  | <b>205 ADJ: 672</b>         | <b>365 ADJ: 1184</b> | <b>ADG: 3.5</b> |
| Rockn D Ambush 1531 .....      | Paramont Ambush 2172        |                      |                 |
| <b>B/R AMBUSH 28</b>           | MS Blackcap Band of RD 1301 |                      |                 |
| B/R Ruby of Tiffany 8250 ..... | N Bar Emulation EXT         |                      |                 |
|                                | B/R Ruby of Tiffany 5113    |                      |                 |
| QLC Exacto G337M .....         | JLB Exacto 416              |                      |                 |
| <b>MISS SARA MK 3261</b>       | QLC B51 Pride Y226G         |                      |                 |
| Miss Sara MK 0184 .....        | QLC B61 Merger A562H        |                      |                 |
|                                | Miss Sara MK 777            |                      |                 |

**EXPECTED PROGENY DIFFERENCE**

| BW I+2.7 | WW I+49 | MILK I+14 | YW I+90 |
|----------|---------|-----------|---------|
|----------|---------|-----------|---------|

Dam's record: 4 calves ratio 95.

## 99

**KRAYE NET WORTH JK 8150**

| Calved 2/08/08              |                         | Tattoo: 8150         |                 |
|-----------------------------|-------------------------|----------------------|-----------------|
| <b>BW: 95</b>               | <b>205 ADJ: 670</b>     | <b>365 ADJ: 1217</b> | <b>ADG: 3.8</b> |
| SAV 8180 Traveler 004 ..... | Sitz Traveler 8180      |                      |                 |
| <b>SAV NET WORTH 4200</b>   | Boyd Forever Lady 8003  |                      |                 |
| SAV May 2410 .....          | SAF 598 Bando 5175      |                      |                 |
|                             | SAV May 6269            |                      |                 |
| Connealy VRD 869 .....      | Vermilion Dateline 7078 |                      |                 |
| <b>MISS QUEEN JK 4151</b>   | Eura Cap of Conanga     |                      |                 |
| Miss Queen JK 9117 .....    | HAR New Design H81      |                      |                 |
|                             | Miss Queen JK 504       |                      |                 |

**EXPECTED PROGENY DIFFERENCE**

| BW I+4.6 | WW I+48 | MILK I+27 | YW I+95 |
|----------|---------|-----------|---------|
|----------|---------|-----------|---------|

Dam's record: 3 calves ratio 108.

## 100

**KRAYE FORESIGHT DK 8144**

| Calved 2/08/08            |                             | Tattoo: 8144         |                 |
|---------------------------|-----------------------------|----------------------|-----------------|
| <b>BW: 98</b>             | <b>205 ADJ: 673</b>         | <b>365 ADJ: 1211</b> | <b>ADG: 3.7</b> |
| Papa Forte 1921 .....     | Papa Optima 9818            |                      |                 |
| <b>WOODHILL FORESIGHT</b> | Papa Envious Blackbird 8832 |                      |                 |
| Bon View Gammer 85 .....  | Bon View Bando 598          |                      |                 |
|                           | Bon View Gammer 233         |                      |                 |
| GAR Grid Maker .....      | GDAR Traveler 044           |                      |                 |
| <b>JD BARBEL 3702</b>     | GAR Precision 2536          |                      |                 |
| JD Barbel 3702 .....      | Rito 2100 GDAR              |                      |                 |
|                           | JD Barbel 702               |                      |                 |

**EXPECTED PROGENY DIFFERENCE**

| BW I+5.7 | WW I+54 | MILK I+19 | YW I+93 |
|----------|---------|-----------|---------|
|----------|---------|-----------|---------|

Dam's record: 3 calves ratio 99. Granddam and great granddam are Pathfinder cows.

# 101

## KRAYE 1961 JK 8135

|                             |                             |                            |                 |
|-----------------------------|-----------------------------|----------------------------|-----------------|
| Calved 2/07/08              |                             | Tattoo: 8135               |                 |
| <b>BW: 82</b>               | <b>205 ADJ: 668</b>         | <b>365 ADJ: 1124</b>       | <b>ADG: 3.2</b> |
| SAF 598 Bando 5175 .....    | Bon View Bando 598          | SAF Royal Lass 1002        |                 |
| <b>HSAF BANDO 1961</b>      | JKS Miss Cheyenne 196 ..... | N Bar Emulation EXT        |                 |
|                             | SAF Focus of ER .....       | Magic Meadow Miss Cheyenne |                 |
|                             |                             | SAF Fame                   |                 |
| <b>MISS BURGESS JK 5135</b> |                             | GDAR Forever Lady 246      |                 |
| Miss Burgess JK 2205 .....  |                             | Dameron Fame 979           |                 |
|                             |                             | Miss Burgess JK 939        |                 |

### EXPECTED PROGENY DIFFERENCE

|                 |                |                  |                |
|-----------------|----------------|------------------|----------------|
| <b>BW I+1.6</b> | <b>WW I+48</b> | <b>MILK I+20</b> | <b>YW I+91</b> |
|-----------------|----------------|------------------|----------------|

Recommended for larger heifers.

# 102

## KRAYE FORESIGHT JK 8130

|                               |                          |                             |                 |
|-------------------------------|--------------------------|-----------------------------|-----------------|
| Calved 2/07/08                |                          | Tattoo: 8130                |                 |
| <b>BW: 92</b>                 | <b>205 ADJ: 668</b>      | <b>365 ADJ: 1180</b>        | <b>ADG: 3.5</b> |
| Papa Forte 1921 .....         | Papa Optima 9818         | Papa Envious Blackbird 8832 |                 |
| <b>WOODHILL FORESIGHT</b>     | Bon View Gammer 85 ..... | Bon View Bando 598          |                 |
|                               |                          | Bon View Gammer 233         |                 |
|                               | A&B Yukon 2115 .....     | A&B Yukon 7150              |                 |
| <b>MISS BLACKBIRD JK 4196</b> |                          | A&b Annie 4008              |                 |
| Miss Blackbird JK 1116 .....  |                          | Stevenson Royce 741C        |                 |
|                               |                          | Miss Blackbird FK 541       |                 |

### EXPECTED PROGENY DIFFERENCE

|                 |                |                  |                |
|-----------------|----------------|------------------|----------------|
| <b>BW I+3.8</b> | <b>WW I+53</b> | <b>MILK I+22</b> | <b>YW I+94</b> |
|-----------------|----------------|------------------|----------------|

Dam's record: 3 calves ratio 105.

# 103

## KRAYE IN FOCUS JK 8223

|                             |                            |                         |                 |
|-----------------------------|----------------------------|-------------------------|-----------------|
| Calved 2/14/08              |                            | Tattoo: 8223            |                 |
| <b>BW: 74</b>               | <b>205 ADJ: 667</b>        | <b>365 ADJ: 1171</b>    | <b>ADG: 3.5</b> |
| SAF Focus of ER .....       | SAF Fame                   | GDAR Forever Lady 246   |                 |
| <b>MYTTY IN FOCUS</b>       | Mytty Countess 906 .....   | Sitz Alliance 6595      |                 |
|                             |                            | Balldridge Countess 357 |                 |
|                             | B/R New Frontier 095 ..... | B/R New Design 036      |                 |
| <b>MISS BURGESS JK 6254</b> |                            | White Fence Pride H1    |                 |
| Miss Burgess JK 284 .....   |                            | Woodhill Triple Threat  |                 |
|                             |                            | Miss Burgess JK 8133    |                 |

### EXPECTED PROGENY DIFFERENCE

|                 |                |                  |                |
|-----------------|----------------|------------------|----------------|
| <b>BW I+0.2</b> | <b>WW I+48</b> | <b>MILK I+20</b> | <b>YW I+91</b> |
|-----------------|----------------|------------------|----------------|

Dam's record: 1 calf ratio 95. Recommended for heifers.

# 104

## KRAYE 2V1 JK 8271

|                                |                          |                            |                 |
|--------------------------------|--------------------------|----------------------------|-----------------|
| Calved 2/17/08                 |                          | Tattoo: 8271               |                 |
| <b>BW: 87</b>                  | <b>205 ADJ: 671</b>      | <b>365 ADJ: 1173</b>       | <b>ADG: 3.5</b> |
| Bon View New Design 1407 ..... | B/R New Design 036       | Bon View Pride 664         |                 |
| <b>RITO 2V1 OF 2536 1407</b>   | GAR Precision 2536 ..... | GAR Precision 1680         |                 |
|                                |                          | GAR Ext 2104               |                 |
|                                | 4 G Precision 117 .....  | Twin Valley Precision E161 |                 |
| <b>BLACK CANDAR JK 3165</b>    |                          | HAR Bando Queen H76        |                 |
| Black Candar FK 4152 .....     |                          | GDAR Traveler 71           |                 |
|                                |                          | Black Candar FK 304        |                 |

### EXPECTED PROGENY DIFFERENCE

|                 |                |                  |                |
|-----------------|----------------|------------------|----------------|
| <b>BW I+2.5</b> | <b>WW I+47</b> | <b>MILK I+22</b> | <b>YW I+88</b> |
|-----------------|----------------|------------------|----------------|

Dam's record: 4 calves ratio 101. Granddam is a Pathfinder cow.

# 105

## KRAYE NET WORTH JK 8285

|                                  |                       |                          |                 |
|----------------------------------|-----------------------|--------------------------|-----------------|
| Calved 2/18/08                   |                       | Tattoo: 8285             |                 |
| <b>BW: 99</b>                    | <b>205 ADJ: 669</b>   | <b>365 ADJ: 1203</b>     | <b>ADG: 3.7</b> |
| SAV 8180 Traveler 004 .....      | Sitz Traveler 8180    | Boyd Forever Lady 8003   |                 |
| <b>SAV NET WORTH 4200</b>        | SAV May 2410 .....    | SAF 598 Bando 5175       |                 |
|                                  |                       | SAV May 6269             |                 |
|                                  | Dameron VRD 237 ..... | Vermilion Dateline 7078  |                 |
| <b>MISS BLACKCLASS JK 4154</b>   |                       | Sedgwicks Wendy 3859     |                 |
| Miss Blackclass 1N9 of T M ..... |                       | TM Online 8N96           |                 |
|                                  |                       | Miss Blackclass 4 of T M |                 |

### EXPECTED PROGENY DIFFERENCE

|                 |                |                  |                |
|-----------------|----------------|------------------|----------------|
| <b>BW I+5.3</b> | <b>WW I+47</b> | <b>MILK I+24</b> | <b>YW I+97</b> |
|-----------------|----------------|------------------|----------------|

Dam's record: 3 calves ratio 104.

# 106

## KRAYE ON TARGET FK 8293

|                              |                        |                      |                 |
|------------------------------|------------------------|----------------------|-----------------|
| Calved 2/18/08               |                        | Tattoo: 8293         |                 |
| <b>BW: 82</b>                | <b>205 ADJ: 668</b>    | <b>365 ADJ: 1100</b> | <b>ADG: 3.1</b> |
| SAF 598 Bando 5175 .....     | Bon View Bando 598     |                      |                 |
| <b>BOYD ON TARGET 1083</b>   | SAF Royal Lass 1002    |                      |                 |
| Boyd Forever Lady 7095 ..... | DHD Traveler 6807      |                      |                 |
| White Oak Precise 6002 ..... | SVF Forever Lady 57D   |                      |                 |
| <b>QUEEN FK 3120</b>         | GAR Precision 1680     |                      |                 |
| Queen FK 1406 .....          | Stone Gate Jessie      |                      |                 |
|                              | B/R New Dimension 7127 |                      |                 |
|                              | Imperial Queen 990     |                      |                 |

### EXPECTED PROGENY DIFFERENCE

|                 |                |                  |                |
|-----------------|----------------|------------------|----------------|
| <b>BW I+2.4</b> | <b>WW I+44</b> | <b>MILK I+18</b> | <b>YW I+89</b> |
|-----------------|----------------|------------------|----------------|

Dam's record: 4 calves ratio 95. Granddam is a Pathfinder cow.

# 107

## KRAYE RITO 416 JK 8320

|                                 |                       |                      |                 |
|---------------------------------|-----------------------|----------------------|-----------------|
| Calved 2/21/08                  |                       | Tattoo: 8320         |                 |
| <b>BW: 88</b>                   | <b>205 ADJ: 669</b>   | <b>365 ADJ: 1131</b> | <b>ADG: 3.2</b> |
| Rito 112 of 2536 Rito 616 ..... | Rito 616 of 4B20 6807 |                      |                 |
| <b>TC RITO 416</b>              | GAR Precision 2536    |                      |                 |
| TC Chloe 2056 .....             | Connealy Forefront    |                      |                 |
| Bon View New Design 1407 .....  | TC Chloe 6010         |                      |                 |
| <b>MISS EVELYN JK 420</b>       | B/R New Design 036    |                      |                 |
| Miss Evelyn JK 237 .....        | Bon View Pride 664    |                      |                 |
|                                 | SAF Focus of ER       |                      |                 |
|                                 | Miss Evelyn JK 017    |                      |                 |

### EXPECTED PROGENY DIFFERENCE

|                 |                |                  |                |
|-----------------|----------------|------------------|----------------|
| <b>BW I+2.2</b> | <b>WW I+45</b> | <b>MILK I+26</b> | <b>YW I+85</b> |
|-----------------|----------------|------------------|----------------|

Dam's record: 3 calves ratio 103. Recommended for larger heifers.

# 108

## KRAYE DECADE JK 8374

|                         |                          |                      |                 |
|-------------------------|--------------------------|----------------------|-----------------|
| Calved 3/02/08          |                          | Tattoo: 8374         |                 |
| <b>BW: 89</b>           | <b>205 ADJ: 671</b>      | <b>365 ADJ: 1169</b> | <b>ADG: 3.5</b> |
| Lau Decade .....        | CA Future Direction 5321 |                      |                 |
| <b>4 G DECADE 6111</b>  | LUVF Alliance JC 111     |                      |                 |
| 4 G Mist 243 .....      | Grandview Womack Direct  |                      |                 |
| Dameron VRD 237 .....   | 4 G Mist 972             |                      |                 |
| <b>PRIDE OF JK 4106</b> | Vermilion Dateline 7078  |                      |                 |
| Pride of JK 1100 .....  | Sedgwicks Wendy 3859     |                      |                 |
|                         | War Command 7131 3247    |                      |                 |
|                         | Pride of FK 309          |                      |                 |

### EXPECTED PROGENY DIFFERENCE

|                 |                |                  |                |
|-----------------|----------------|------------------|----------------|
| <b>BW I+2.7</b> | <b>WW I+47</b> | <b>MILK I+18</b> | <b>YW I+85</b> |
|-----------------|----------------|------------------|----------------|

Dam's record: 3 calves ratio 96. Great granddam is a Pathfinder cow.

# 109

## KRAYE 1961 JK 843

|                             |                            |                      |                 |
|-----------------------------|----------------------------|----------------------|-----------------|
| Calved 2/01/08              |                            | Tattoo: 843          |                 |
| <b>BW: 85</b>               | <b>205 ADJ: 670</b>        | <b>365 ADJ: 1160</b> | <b>ADG: 3.4</b> |
| SAF 598 Bando 5175 .....    | Bon View Bando 598         |                      |                 |
| <b>HSAF BANDO 1961</b>      | SAF Royal Lass 1002        |                      |                 |
| JKS Miss Cheyenne 196 ..... | N Bar Emulation EXT        |                      |                 |
| SAV 8180 Traveler 004 ..... | Magic Meadow Miss Cheyenne |                      |                 |
| <b>MISS PEGGY JK 625</b>    | Sitz Traveler 8180         |                      |                 |
| Miss Peggy JK 258 .....     | Boyd Forever Lady 8003     |                      |                 |
|                             | HAR New Design H81         |                      |                 |
|                             | Miss Peggy JK 909          |                      |                 |

### EXPECTED PROGENY DIFFERENCE

|                 |                |                  |                |
|-----------------|----------------|------------------|----------------|
| <b>BW I+3.1</b> | <b>WW I+49</b> | <b>MILK I+24</b> | <b>YW I+93</b> |
|-----------------|----------------|------------------|----------------|

Dam's record: 1 calf ratio 95.

# 110

## KRAYE IMAGE MAKER JK 807

|                             |                          |                      |                 |
|-----------------------------|--------------------------|----------------------|-----------------|
| Calved 1/27/08              |                          | Tattoo: 807          |                 |
| <b>BW: 77</b>               | <b>205 ADJ: 660</b>      | <b>365 ADJ: 1138</b> | <b>ADG: 3.3</b> |
| Hero 6267 of RR 2418 .....  | RR Hero 6267             |                      |                 |
| <b>HA IMAGE MAKER 0415</b>  | RR Everelda Entense 0413 |                      |                 |
| HA Rito Blackcap 9038 ..... | H 96 Rito 2100 7371      |                      |                 |
| SAV 8180 Traveler 004 ..... | H 96 Blackcap 3835       |                      |                 |
| <b>MISS CANDAR JK 646</b>   | Sitz Traveler 8180       |                      |                 |
| Miss Candar JK 4223 .....   | Boyd Forever Lady 8003   |                      |                 |
|                             | Hyline Right Time 338    |                      |                 |
|                             | Miss Candar FK 308       |                      |                 |

### EXPECTED PROGENY DIFFERENCE

|                 |                |                  |                |
|-----------------|----------------|------------------|----------------|
| <b>BW I+1.8</b> | <b>WW I+56</b> | <b>MILK I+28</b> | <b>YW I+97</b> |
|-----------------|----------------|------------------|----------------|

Dam's record: 1 calf ratio 94. Recommended for larger heifers.

## 111

## KRAYE NET WORTH JK 8187

| Calved 2/11/08               |                        | Tattoo: 8187         |                 |
|------------------------------|------------------------|----------------------|-----------------|
| <b>BW: 86</b>                | <b>205 ADJ: 656</b>    | <b>365 ADJ: 1109</b> | <b>ADG: 3.3</b> |
| SAV 8180 Traveler 004 .....  | Sitz Traveler 8180     |                      |                 |
| <b>SAV NET WORTH 4200</b>    | Boyd Forever Lady 8003 |                      |                 |
| SAV May 2410 .....           | SAF 598 Bando 5175     |                      |                 |
|                              | SAV May 6269           |                      |                 |
| GAR Grid Maker .....         | GDAR Traveler 044      |                      |                 |
| <b>QUEEN LADY JK 527</b>     | GAR Precision 2536     |                      |                 |
| Queen Lady 1N38 of T M ..... | TM Online 8N96         |                      |                 |
|                              | Queen Lady 5 of T M    |                      |                 |
| EXPECTED PROGENY DIFFERENCE  |                        |                      |                 |
| <b>BW I+3.6</b>              | <b>WW I+52</b>         | <b>MILK I+15</b>     | <b>YW I+99</b>  |

## 112

## KRAYE FORESIGHT JK 8105

| Calved 2/06/08                |                             | Tattoo: 8105         |                 |
|-------------------------------|-----------------------------|----------------------|-----------------|
| <b>BW: 87</b>                 | <b>205 ADJ: 655</b>         | <b>365 ADJ: 1157</b> | <b>ADG: 3.5</b> |
| Papa Forte 1921 .....         | Papa Optima 9818            |                      |                 |
| <b>WOODHILL FORESIGHT</b>     | Papa Envious Blackbird 8832 |                      |                 |
| Bon View Gammer 85 .....      | Bon View Bando 598          |                      |                 |
|                               | Bon View Gammer 233         |                      |                 |
| Imperial Precision 1416 ..... | Twin Valley Precision E161  |                      |                 |
| <b>MISS EVELYN JK 5289</b>    | Imperial Queen Lady 81E     |                      |                 |
| Miss Evelyn JK 845 .....      | KD Cappuccino of Krugerrand |                      |                 |
|                               | Miss Evelyn JK 4122         |                      |                 |
| EXPECTED PROGENY DIFFERENCE   |                             |                      |                 |
| <b>BW I+2.5</b>               | <b>WW I+47</b>              | <b>MILK I+18</b>     | <b>YW I+85</b>  |

## 113

## KRAYE IMAGE MAKER MK 825

| Calved 1/31/08              |                          | Tattoo: 825          |                 |
|-----------------------------|--------------------------|----------------------|-----------------|
| <b>BW: 76</b>               | <b>205 ADJ: 670</b>      | <b>365 ADJ: 1172</b> | <b>ADG: 3.5</b> |
| Hero 6267 of RR 2418 .....  | RR Hero 6267             |                      |                 |
| <b>HA IMAGE MAKER 0415</b>  | RR Everelda Entense 0413 |                      |                 |
| HA Rito Blackcap 9038 ..... | H 96 Rito 2100 7371      |                      |                 |
|                             | H 96 Blackcap 3835       |                      |                 |
| TC Freedom 104 .....        | Connealy Forefront       |                      |                 |
| <b>MISS QUEEN MK 665</b>    | TC Ruby 9095             |                      |                 |
| Miss Queen MK 3248 .....    | QLC Exacto G337M         |                      |                 |
|                             | Miss Queen MK 035        |                      |                 |
| EXPECTED PROGENY DIFFERENCE |                          |                      |                 |
| <b>BW I+1.8</b>             | <b>WW I+54</b>           | <b>MILK I+29</b>     | <b>YW I+95</b>  |

Dam's record: 1 calf ratio 95. Recommended for larger heifers.

## 114

## KRAYE 1961 JK 8237

| Calved 2/15/08               |                               | Tattoo: 8237         |                 |
|------------------------------|-------------------------------|----------------------|-----------------|
| <b>BW: 82</b>                | <b>205 ADJ: 664</b>           | <b>365 ADJ: 1117</b> | <b>ADG: 3.2</b> |
| SAF 598 Bando 5175 .....     | Bon View Bando 598            |                      |                 |
| <b>HSAF BANDO 1961</b>       | SAF Royal Lass 1002           |                      |                 |
| JKS Miss Cheyenne 196 .....  | N Bar Emulation EXT           |                      |                 |
|                              | Magic Meadow Miss Cheyenne    |                      |                 |
| Connealy Forefront .....     | Connealy Frontline            |                      |                 |
| <b>IMPERIAL QUEEN JK 306</b> | Eileen Heartland Conanga 6443 |                      |                 |
| Imperial Queen JK 6116 ..... | QLC Requisite                 |                      |                 |
|                              | Imperial Queen 632            |                      |                 |
| EXPECTED PROGENY DIFFERENCE  |                               |                      |                 |
| <b>BW I+1.1</b>              | <b>WW I+49</b>                | <b>MILK I+19</b>     | <b>YW I+84</b>  |

Recommended for larger heifers.

## 115

## KRAYE ON TARGET JK 8245

| Calved 2/16/08               |                         | Tattoo: 8245         |                 |
|------------------------------|-------------------------|----------------------|-----------------|
| <b>BW: 92</b>                | <b>205 ADJ: 665</b>     | <b>365 ADJ: 1247</b> | <b>ADG: 4.0</b> |
| SAF 598 Bando 5175 .....     | Bon View Bando 598      |                      |                 |
| <b>BOYD ON TARGET 1083</b>   | SAF Royal Lass 1002     |                      |                 |
| Boyd Forever Lady 7095 ..... | DHD Traveler 6807       |                      |                 |
|                              | SVF Forever Lady 57D    |                      |                 |
| Connealy VRD 869 .....       | Vermilion Dateline 7078 |                      |                 |
| <b>SANDY PRIDE JK 473</b>    | Eura Cap of Conanga     |                      |                 |
| JD Sandy Pride 8383 .....    | Daiggers Bando 1        |                      |                 |
|                              | JD Sandy Pride 6383     |                      |                 |
| EXPECTED PROGENY DIFFERENCE  |                         |                      |                 |
| <b>BW I+3.9</b>              | <b>WW I+49</b>          | <b>MILK I+19</b>     | <b>YW I+95</b>  |

Dam's record: 3 calves ratio 97.

## 116

## KRAYE RIGHT TIME JK 8221

|                              |                                       |                                      |                 |
|------------------------------|---------------------------------------|--------------------------------------|-----------------|
| <b>BW: 88</b>                | Calved 2/14/08<br><b>205 ADJ: 663</b> | Tattoo: 8221<br><b>365 ADJ: 1124</b> | <b>ADG: 3.2</b> |
| Leachman Right Time .....    |                                       | N Bar Emulation EXT                  |                 |
| <b>HYLINE RIGHT TIME 338</b> |                                       | Leachman Erica 002 5                 |                 |
| Hyline Pride 265 .....       |                                       | Hyline SVF Traveler 0115             |                 |
| B/R Ambush 28 .....          |                                       | Hyline Pride 870                     |                 |
| <b>ERICA JK 533</b>          |                                       | Rockn D Ambush 1531                  |                 |
| Erica JK 3253 .....          |                                       | B/R Ruby of Tiffany 8250             |                 |
|                              |                                       | QLC Exacto G337M                     |                 |
|                              |                                       | Erica JK 083                         |                 |

## EXPECTED PROGENY DIFFERENCE

|                 |                |                  |                |
|-----------------|----------------|------------------|----------------|
| <b>BW I+3.8</b> | <b>WW I+55</b> | <b>MILK I+24</b> | <b>YW I+96</b> |
|-----------------|----------------|------------------|----------------|

Dam's record: 2 calves ratio 104.

## 117

## KRAYE AMBUSH JK 8216

|                                |                                       |                                      |                 |
|--------------------------------|---------------------------------------|--------------------------------------|-----------------|
| <b>BW: 88</b>                  | Calved 2/13/08<br><b>205 ADJ: 660</b> | Tattoo: 8216<br><b>365 ADJ: 1143</b> | <b>ADG: 3.4</b> |
| Rockn D Ambush 1531 .....      |                                       | Paramont Ambush 2172                 |                 |
| <b>B/R AMBUSH 28</b>           |                                       | MS Blackcap Band of RD 1301          |                 |
| B/R Ruby of Tiffany 8250 ..... |                                       | N Bar Emulation EXT                  |                 |
| B/R Ruby of Tiffany 8250 ..... |                                       | B/R Ruby of Tiffany 5113             |                 |
| Connealy Forefront .....       |                                       | Connealy Frontline                   |                 |
| <b>MISS QUEEN JK 341</b>       |                                       | Eileen Heartland Conanga 6443        |                 |
| Miss Queen JK 7202 .....       |                                       | Dameron Robust                       |                 |
|                                |                                       | Miss Queen JK 436                    |                 |

## EXPECTED PROGENY DIFFERENCE

|                 |                |                  |                |
|-----------------|----------------|------------------|----------------|
| <b>BW I+2.4</b> | <b>WW I+49</b> | <b>MILK I+15</b> | <b>YW I+90</b> |
|-----------------|----------------|------------------|----------------|

Dam's record: 4 calves ratio 102.

## 118

## KRAYE IMAGE MAKER JK 878

|                             |                                       |                                     |                 |
|-----------------------------|---------------------------------------|-------------------------------------|-----------------|
| <b>BW: 89</b>               | Calved 2/04/08<br><b>205 ADJ: 657</b> | Tattoo: 878<br><b>365 ADJ: 1129</b> | <b>ADG: 3.3</b> |
| Hero 6267 of RR 2418 .....  |                                       | RR Hero 6267                        |                 |
| <b>HA IMAGE MAKER 0415</b>  |                                       | RR Everelda Entense 0413            |                 |
| HA Rito Blackcap 9038 ..... |                                       | H 96 Rito 2100 7371                 |                 |
|                             |                                       | H 96 Blackcap 3835                  |                 |
| Connealy Danny Boy .....    |                                       | Connealy Timeline                   |                 |
| <b>MISS BURGESS JK 687</b>  |                                       | Energy of Conanga 4851              |                 |
| Miss Burgess JK 4222 .....  |                                       | Sitz Alliance 6595                  |                 |
|                             |                                       | Miss Burgess JK 2296                |                 |

## EXPECTED PROGENY DIFFERENCE

|                 |                |                  |                |
|-----------------|----------------|------------------|----------------|
| <b>BW I+2.8</b> | <b>WW I+53</b> | <b>MILK I+25</b> | <b>YW I+97</b> |
|-----------------|----------------|------------------|----------------|

Recommended for larger heifers.

## 119

## KRAYE IN FOCUS FK 8147

|                                    |                                       |                                      |                 |
|------------------------------------|---------------------------------------|--------------------------------------|-----------------|
| <b>BW: 75</b>                      | Calved 2/08/08<br><b>205 ADJ: 613</b> | Tattoo: 8147<br><b>365 ADJ: 1098</b> | <b>ADG: 3.4</b> |
| SAF Focus of ER .....              |                                       | SAF Fame                             |                 |
| <b>MYTTY IN FOCUS</b>              |                                       | GDAR Forever Lady 246                |                 |
| Mytty Countess 906 .....           |                                       | Sitz Alliance 6595                   |                 |
|                                    |                                       | Baldrige Countess 357                |                 |
| Connealy Danny Boy .....           |                                       | Connealy Timeline                    |                 |
| <b>IMPERIAL QUEEN LADY FK 5212</b> |                                       | Energy of Conanga 4851               |                 |
| Imperial Queen Lady FK 3167 .....  |                                       | VDAR Bando 97                        |                 |
|                                    |                                       | Imperial Queen Lady PD 802           |                 |

## EXPECTED PROGENY DIFFERENCE

|                 |                |                  |                |
|-----------------|----------------|------------------|----------------|
| <b>BW I-1.1</b> | <b>WW I+46</b> | <b>MILK I+16</b> | <b>YW I+85</b> |
|-----------------|----------------|------------------|----------------|

Granddam is a Pathfinder cow. Recommended for heifers.

## 120

## KRAYE FORESIGHT JK 8245

|                                    |                                       |                                      |                 |
|------------------------------------|---------------------------------------|--------------------------------------|-----------------|
| <b>BW: 89</b>                      | Calved 2/16/08<br><b>205 ADJ: 651</b> | Tattoo: 8245<br><b>365 ADJ: 1136</b> | <b>ADG: 3.4</b> |
| Papa Forte 1921 .....              |                                       | Papa Optima 9818                     |                 |
| <b>WOODHILL FORESIGHT</b>          |                                       | Papa Envious Blackbird 8832          |                 |
| Bon View Gammer 85 .....           |                                       | Bon View Bando 598                   |                 |
|                                    |                                       | Bon View Gammer 233                  |                 |
| Plowman 1627 of Millbrae SAR ..... |                                       | DHD Traveler 6807                    |                 |
| <b>MISS EVELYN JK 2247</b>         |                                       | MB Joanie 8E8 1627                   |                 |
| Miss Evelyn JK 8348 .....          |                                       | QLC Requisite                        |                 |
|                                    |                                       | Miss Evelyn JK 057                   |                 |

## EXPECTED PROGENY DIFFERENCE

|                 |                |                  |                |
|-----------------|----------------|------------------|----------------|
| <b>BW I+2.8</b> | <b>WW I+49</b> | <b>MILK I+18</b> | <b>YW I+86</b> |
|-----------------|----------------|------------------|----------------|

Dam's record: 5 calves ratio 100.

# 121

## KRAYE ON TARGET JK 8347

| Calved 2/23/08               |                      | Tattoo: 8347         |                 |
|------------------------------|----------------------|----------------------|-----------------|
| <b>BW: 89</b>                | <b>205 ADJ: 650</b>  | <b>365 ADJ: 1098</b> | <b>ADG: 3.1</b> |
| SAF 598 Bando 5175 .....     | Bon View Bando 598   | SAF Royal Lass 1002  |                 |
| <b>BOYD ON TARGET 1083</b>   | DHD Traveler 6807    | SVF Forever Lady 57D |                 |
| Boyd Forever Lady 7095 ..... | Minerts Fortune 2000 | SAF Royal Lass 1027  |                 |
| SAF Fame .....               | Dameron Robust       | Miss Queen JK 436    |                 |
| <b>MISS QUEEN JK 949</b>     |                      |                      |                 |
| Miss Queen JK 7202 .....     |                      |                      |                 |

### EXPECTED PROGENY DIFFERENCE

|                 |                |                  |                |
|-----------------|----------------|------------------|----------------|
| <b>BW I+3.3</b> | <b>WW I+49</b> | <b>MILK I+16</b> | <b>YW I+95</b> |
|-----------------|----------------|------------------|----------------|

Dam's record: 8 calves ratio 102.

# 122

## KRAYE YUKON JK 882

| Calved 2/04/08                |                            | Tattoo: 882             |                 |
|-------------------------------|----------------------------|-------------------------|-----------------|
| <b>BW: 99</b>                 | <b>205 ADJ: 639</b>        | <b>365 ADJ: 1158</b>    | <b>ADG: 3.5</b> |
| A&B Yukon 7150 .....          | Krugerrand of Donamere 490 | A&B Queen 4173          |                 |
| <b>A&amp;B YUKON 2115</b>     | N Bar Emulation Ext        | A&b Rito Annie 2031     |                 |
| A&b Annie 4008 .....          | B/R New Frontier 095       | Buffalos Mary BN26      |                 |
| Buffalos Frontier BN43 .....  | Buffalos Mary BN26         | Vermilion Dateline 7078 |                 |
| <b>MISS BLACKBIRD JK 5258</b> | Miss Rito FK 5158          |                         |                 |
| Miss Blackbird JK 131 .....   |                            |                         |                 |

### EXPECTED PROGENY DIFFERENCE

|                 |                |                  |                |
|-----------------|----------------|------------------|----------------|
| <b>BW I+4.7</b> | <b>WW I+50</b> | <b>MILK I+12</b> | <b>YW I+95</b> |
|-----------------|----------------|------------------|----------------|

Dam's record: 2 calves 96 ratio. Great granddam is a Pathfinder cow.

# 123

## KRAYE IN FOCUS JK 842

| Calved 2/01/08           |                       | Tattoo: 842           |                 |
|--------------------------|-----------------------|-----------------------|-----------------|
| <b>BW: 77</b>            | <b>205 ADJ: 644</b>   | <b>365 ADJ: 1050</b>  | <b>ADG: 3.1</b> |
| SAF Focus of ER .....    | SAF Fame              | GDAR Forever Lady 246 |                 |
| <b>MYTTY IN FOCUS</b>    | GDAR Forever Lady 246 | Sitz Alliance 6595    |                 |
| Mytty Countess 906 ..... | Sitz Alliance 6595    | Baldrige Countess 357 |                 |
| Boyd New Day 8005 .....  | AAR New Trend         | SVF Forever Lady 57D  |                 |
| <b>MISS EMMA JK 6190</b> | SVF Forever Lady 57D  | B/R New Frontier 095  |                 |
| Miss Emma JK 3177 .....  | B/R New Frontier 095  | Miss Emma FK 7196     |                 |

### EXPECTED PROGENY DIFFERENCE

|                 |                |                  |                |
|-----------------|----------------|------------------|----------------|
| <b>BW I+0.4</b> | <b>WW I+46</b> | <b>MILK I+20</b> | <b>YW I+88</b> |
|-----------------|----------------|------------------|----------------|

Great granddam is a Pathfinder cow. Recommended for heifers.

# 124

## KRAYE RIGHT TIME JK 838

| Calved 2/01/08               |                          | Tattoo: 838              |                 |
|------------------------------|--------------------------|--------------------------|-----------------|
| <b>BW: 87</b>                | <b>205 ADJ: 629</b>      | <b>365 ADJ: 1144</b>     | <b>ADG: 3.5</b> |
| Leachman Right Time .....    | N Bar Emulation EXT      | Leachman Erica 0025      |                 |
| <b>HYLINE RIGHT TIME 338</b> | Leachman Erica 0025      | Hyline SVF Traveler 0115 |                 |
| Hyline Pride 265 .....       | Hyline SVF Traveler 0115 | Hyline Pride 870         |                 |
| Buffalos Frontier BN43 ..... | B/R New Frontier 095     | Buffalos Mary BN26       |                 |
| <b>MISS QUEEN JK 538</b>     | Buffalos Mary BN26       | SAF Focus of ER          |                 |
| Miss Queen JK 124 .....      | SAF Focus of ER          | Miss Queen JK 9117       |                 |

### EXPECTED PROGENY DIFFERENCE

|                 |                |                  |                |
|-----------------|----------------|------------------|----------------|
| <b>BW I+3.1</b> | <b>WW I+47</b> | <b>MILK I+18</b> | <b>YW I+84</b> |
|-----------------|----------------|------------------|----------------|

# 125

## KRAYE RIGHT TIME JK 8198

| Calved 2/12/08                |                          | Tattoo: 8198             |                 |
|-------------------------------|--------------------------|--------------------------|-----------------|
| <b>BW: 78</b>                 | <b>205 ADJ: 617</b>      | <b>365 ADJ: 1030</b>     | <b>ADG: 3.0</b> |
| Leachman Right Time .....     | N Bar Emulation EXT      | Leachman Erica 0025      |                 |
| <b>HYLINE RIGHT TIME 338</b>  | Leachman Erica 0025      | Hyline SVF Traveler 0115 |                 |
| Hyline Pride 265 .....        | Hyline SVF Traveler 0115 | Hyline Pride 870         |                 |
| Grandview Womack Direct ..... | B/R New Design 036       | Mengs Miss Skymerc 78B   |                 |
| <b>MISS ELBA JK 5237</b>      | Mengs Miss Skymerc 78B   | QLC Oscar Y541E          |                 |
| Miss Elba FK 750 .....        | QLC Oscar Y541E          | Miss Elba FK 987         |                 |

### EXPECTED PROGENY DIFFERENCE

|                 |                |                  |                |
|-----------------|----------------|------------------|----------------|
| <b>BW I+3.0</b> | <b>WW I+42</b> | <b>MILK I+21</b> | <b>YW I+79</b> |
|-----------------|----------------|------------------|----------------|

# 126

## KRAYE FORESIGHT JK 8189

|                             |                     |                             |                 |
|-----------------------------|---------------------|-----------------------------|-----------------|
|                             | Calved 2/11/08      | Tattoo: 8189                |                 |
| <b>BW: 105</b>              | <b>205 ADJ: 609</b> | <b>365 ADJ: 1238</b>        | <b>ADG: 4.0</b> |
| Papa Forte 1921 .....       |                     | Papa Optima 9818            |                 |
| <b>WOODHILL FORESIGHT</b>   |                     | Papa Envious Blackbird 8832 |                 |
| Bon View Gammer 85 .....    |                     | Bon View Bando 598          |                 |
|                             |                     | Bon View Gammer 233         |                 |
| B/R Destination 727 .....   |                     | GAR Traveler 1489           |                 |
| <b>MISS MARSHALL JK 233</b> |                     | B/R Ruby of Tiffany 5113    |                 |
| JO Miss Marshall 7130 ..... |                     | JO Super System 329         |                 |
|                             |                     | JO Miss Marshall 301        |                 |

### EXPECTED PROGENY DIFFERENCE

|                 |                |                  |                |
|-----------------|----------------|------------------|----------------|
| <b>BW I+5.7</b> | <b>WW I+45</b> | <b>MILK I+22</b> | <b>YW I+83</b> |
|-----------------|----------------|------------------|----------------|

Dam's record: 5 calves ratio 96. Granddam is a Pathfinder cow.

# 127

## KRAYE 1961 JK 817

|                             |                     |                            |                 |
|-----------------------------|---------------------|----------------------------|-----------------|
|                             | Calved 1/29/08      | Tattoo: 817                |                 |
| <b>BW: 86</b>               | <b>205 ADJ: 740</b> | <b>365 ADJ: 1240</b>       | <b>ADG: 3.6</b> |
| SAF 598 Bando 5175 .....    |                     | Bon View Bando 598         |                 |
| <b>HSAF BANDO 1961</b>      |                     | SAF Royal Lass 1002        |                 |
| JKS Miss Cheyenne 196 ..... |                     | N Bar Emulation EXT        |                 |
|                             |                     | Magic Meadow Miss Cheyenne |                 |
| A&B New Design 3006 .....   |                     | Bon View New Design 1407   |                 |
| <b>Q LADY JK 6262</b>       |                     | A&B Forever Lady 1023      |                 |
| Q Lady JK 4318 .....        |                     | Dameron VRD 237            |                 |
|                             |                     | Q Lady 1N92 of T M         |                 |

### EXPECTED PROGENY DIFFERENCE

|                 |                |                  |                |
|-----------------|----------------|------------------|----------------|
| <b>BW I+3.2</b> | <b>WW I+53</b> | <b>MILK I+28</b> | <b>YW I+98</b> |
|-----------------|----------------|------------------|----------------|

Dam's record: 1 calf ratio 105. Great granddam is a Pathfinder cow.

**20 Purebred  
Commercial Heifers  
WILL SELL in groups of 5!**



## KRAYE 2008 Production Sale



# JOHN KRAYE ANGUS

35791 ANTELOPE VALLEY ROAD  
MULLEN, NE 69152

*Address Service Requested*



LOT 4

PRSR1 STD  
U.S. Postage  
**PAID**  
North Platte, NE  
Permit No. 208

**PLEASE BRING THIS CATALOG WITH YOU TO THE SALE!**

[WWW.KRAYEANGUS.COM](http://WWW.KRAYEANGUS.COM)